



NEW QUEBEC STREET, MARYLEBONE, W1H
£525 per week*

Carter Jonas

FLAT 2, NEW QUEBEC STREET, MARYLEBONE, LONDON, W1H 7RJ

- 1 Bedroom
- 1 Bathroom
- Open Plan
- Wood Floors
- Long Let
- Second Floor
- Unfurnished (or furnished at separate cost)

THE PROPERTY

The property features wooden flooring to the reception room, with a modern contemporary kitchen, separate shower room and double bedroom with good storage.

Rare benefit of washing machine and separate tumble drier.

The property is professionally managed by The Portman Estate.

Available for long term rental on an unfurnished basis, or furnished (at separate cost).

Holding deposit is 1 week's rent = £525 (at asking price)

Security deposit is 5 week's rent = £2,625 (at asking price £525pw)

Minimum term 12 months

Council Tax Band D

For eligibility for resident parking permits, please refer to the <https://www.westminster.gov.uk/parking> website for further details.

For the latest information on broadband and mobile coverage, please visit <https://checker.ofcom.org.uk/en-gb/broadband-coverage> for the most up-to-date details.

The Portman Estate's 110 acres of land within Marylebone, London W1, has a rich heritage dating back to the 16th century and is the setting for continual investment in premium residential properties, shops and independent businesses. The Portman Estate includes key places of architectural and historical interest along with a vibrant blend of shops, including Portman Village, restaurants, wine-bars,

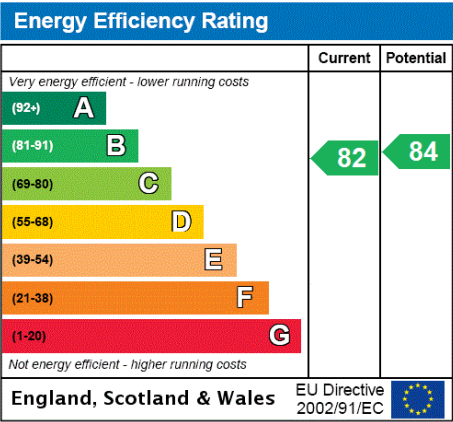
Ideally located one bedroom, second floor apartment set within a beautiful period building in the heart of Portman Village.



hotels and garden squares - a perfect mix of leisure opportunities for residents in the heart of London`s West End.

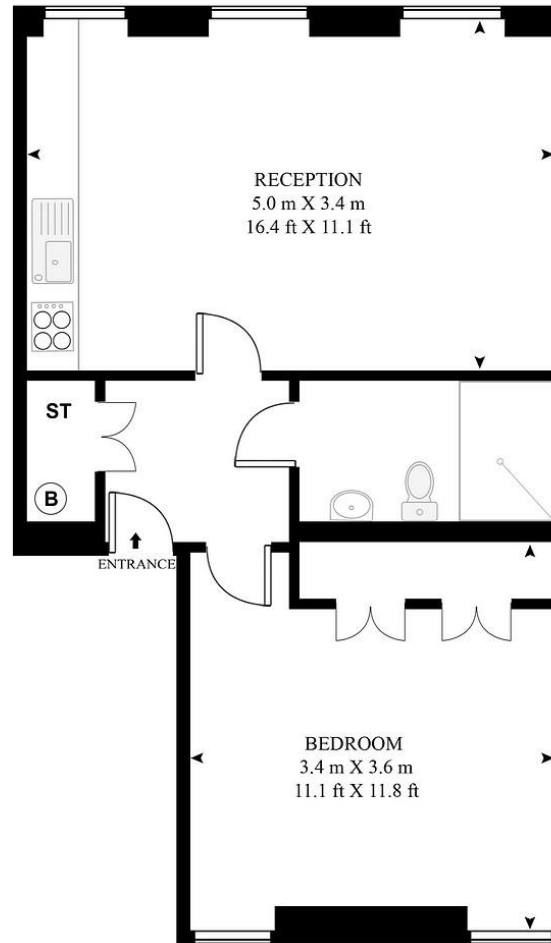
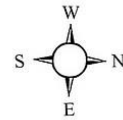
ADDITIONAL INFORMATION

Offers	Available for a minimum term of 12 months longer terms will be considered
Viewing	Strictly by appointment
Local Authority	Westminster City Council - Council Tax Band D



QUEBEC STREET

APPROXIMATE GROSS INTERNAL FLOOR AREA 398 SQ.FT (37 SQ.M)



SECOND FLOOR

HDVA

This floor plan has been defined by the RICS Code of Measurement. This floor plan and all others are for approximate representative purposes only and upon usage is agreed to as such by the client.

WWW: hdvirtualart.com | TEL: 0207 923 7300 | EMAIL: info@hdvirtualart.com

Exclusive UK affiliate of

CHRISTIE'S
INTERNATIONAL REAL ESTATE

IMPORTANT INFORMATION

These particulars are for general information purposes only and do not represent an offer or contract or part of one. Carter Jonas or anyone in their employment has made every attempt to ensure that the particulars and other information provided are as accurate as possible and they are not intended to amount to advice on which you should rely as being factually accurate. Full information which may be relevant to your decision regarding the property can be found on the property listing on carterjonas.co.uk or a separately available material information sheet, and we would advise you to confirm the details of any material information prior to any offer being submitted. You should not assume that the property has all necessary planning, building regulations or other consents and Carter Jonas has not tested any services, facilities, or equipment. Any measurements and distances given are approximate only. Where Carter Jonas has been provided with a floorplan by a third party, we cannot guarantee that the floorplan has been measured in accordance with IPMS. Purchasers or prospective tenants must satisfy themselves of all of the aforementioned by independent inspection or otherwise. Our images only represent part of the property as it appeared at the time they were taken and do not represent the furnishings included; these are confirmed in a separate inventory. If you require further information, please contact us. *Administration fees may apply depending on tenancy type. Please contact your local branch for this information.

T: 020 7486 8866

37 New Cavendish Street, London, W1G 9TL

E: marylebone@carterjonas.co.uk

A member of



Classification L2 - Business Data