



HILL VIEW FOX LANE OX1 5DS

Large House w/ Self-Contained Annexe · Excellent Village Location · Main House: 6 Bedrooms · 3 Reception Rooms · 2 Bathrooms · Large Gardens · In-Ground Heated Pool

DESCRIPTION

Originally two semi detached cottages dating from about 1900, Hill View is now a substantial detached residence which has been extended twice since to provide highly versatile living with the benefit of a self contained annexe. The main part of the house provides accommodation over two floors and includes a family kitchen which opens onto the rear garden together with three other reception rooms on the ground.

The first floor has a very large main bedroom with ensuite, 5 further bedrooms and a family bathroom. Separate to the main accommodation with its own entrance is a self contained annexe currently used as a home office, with two good sized rooms, a kitchen and shower room, thus making it ideal for a relative.

The house has two separate gas boilers, one serving the main accommodation and a second heating the annexe and the swimming pool.

OUTSIDE

The property enjoys good sized gardens, with a secluded rear, well-stocked garden which has an inground heated pool with decked area around. Immediately to the front of the property there is parking for vehicles, and across the private shared access road there is a large area of land measuring approximately 80' by 70' with power, a large garden shed and parking for further vehicles.

LOCATION

Access to the house is via a private road off Fox Lane, Boars Hill, which serves a handful of properties within this attractive elevated residential area approximately four miles south-west of Oxford city centre. There are many lovely walks around Boars Hill, such as to the nearby Sunningwell. The Fox Dribble House is also just

A DECEPTIVELY SPACIOUS DETACHED HOUSE WITH LARGE GARDENS, SWIMMING POOL AND SELF CONTAINED ANNEXE, LOCATED IN HIGHLY REGARDED BOAR'S HILL.



across the road.

There is quick and easy access to nearby Abingdon which offers a good selection of facilities, as well as Oxford city. An excellent choice of schooling is available in both Abingdon and Oxford. Useful distances include Didcot mainline railway station (circa. 10.2 miles) and Oxford railway station (circa. 4 miles).

ADDITIONAL INFORMATION

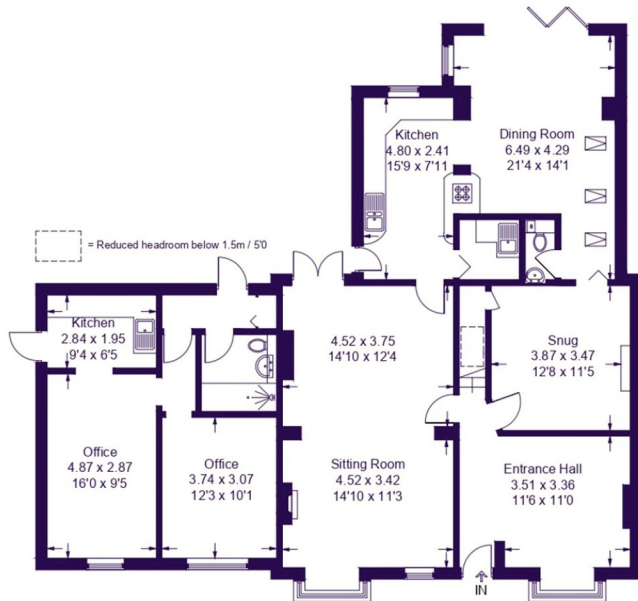
Viewing: Strictly by appointment through the selling agents Carter Jonas - T: 01865 511444

Directions: type here

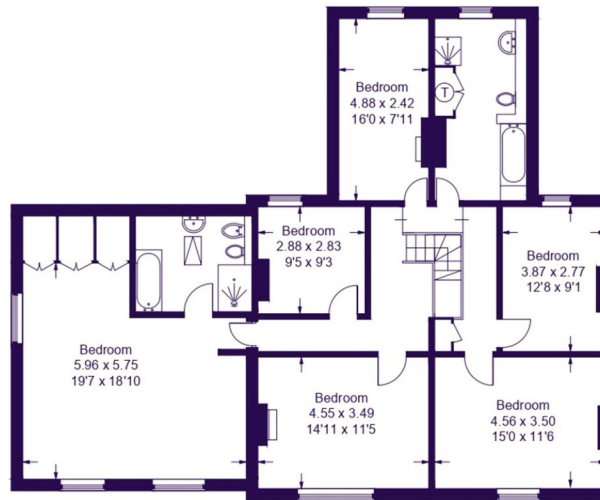


Hill View

Approximate Gross Internal Area
Ground Floor = 156.6 sq m / 1,686 sq ft
First Floor = 138.1 sq m / 1,486 sq ft
Total = 294.7 sq m / 3,172 sq ft



Ground Floor



First Floor

This plan is for layout guidance only. Not drawn to scale unless stated. Windows and door openings are approximate. Whilst every care is taken in the preparation of this plan, please check all dimensions, shapes and compass bearings before making any decisions reliant upon them.
© CJ Property Marketing Ltd Produced for Carter Jonas



Oxford 01865 511444

oxford@carterjonas.co.uk

Mayfield House, 256 Banbury Road, Oxford. OX2 7DE

carterjonas.co.uk

Offices throughout the UK



IMPORTANT INFORMATION

Our property particulars do not represent an offer or contract, or part of one. The information given is without responsibility on the part of the agents, seller(s) or lessor(s) and you should not rely on the information as being factually accurate about the property, its condition or its value. Neither Carter Jonas LLP nor anyone in its employment or acting on its behalf has authority to make any representation or warranty in relation to this property. We have not carried out a detailed survey, nor tested the services, appliances or fittings at the property. The images shown may only represent part of the property and are as they appeared at the time of being photographed. The areas, measurements and distances are approximate only. Any reference to alterations or use does not mean that any necessary planning permission, building regulation or other consent has been obtained. The VAT position relating to the property may change without notice.