



TANGIER ROAD, RICHMOND, TW10
£2,950 per month*

Carter Jonas

TANGIER ROAD, RICHMOND, TW10 5DN

Spacious and newly decorated four-bedroom semi-detached family home with 1,684 sq. ft across three floors. Located on a sought-after tree lined road near top schools, and close to Mortlake and North Sheen stations. Available now on an unfurnished basis.

THE PROPERTY

Recently newly painted throughout, this substantial end of terrace property combines generous proportions with a light and airy feel throughout.

Perfectly positioned on one of the area's most sought after tree lined roads, the home is within easy reach of outstanding local schools, including Holy Trinity and Sheen Mount, and just a short walk from Mortlake and North Sheen stations with direct links to London Waterloo. A range of shops, parks and other local amenities are also close by.

The ground floor features an entrance hall that leads onto two spacious reception rooms with working gas fireplace and conservatory overlooking the rear garden.

Upstairs, the first floor offers three well sized bedrooms and a family bathroom, (shower only) all thoughtfully laid out to suit modern family living, with the fourth bedroom on the second floor.

OUTSIDE

Outside there is an attractive rear garden featuring a mix of a small patio and good-sized lawn, ideal for entertaining. A large conservatory, filled with natural light, provides additional living space year-round. There is also good-sized storage and a shed in the rear of the garden.

The front garden is landscaped and set behind a gated entrance.

Holding Deposit = One week £680.76

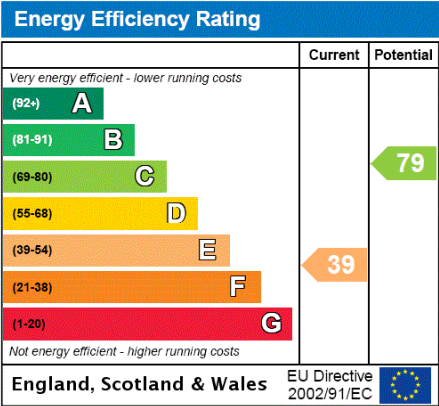
Security Deposit = Five weeks £3403.80

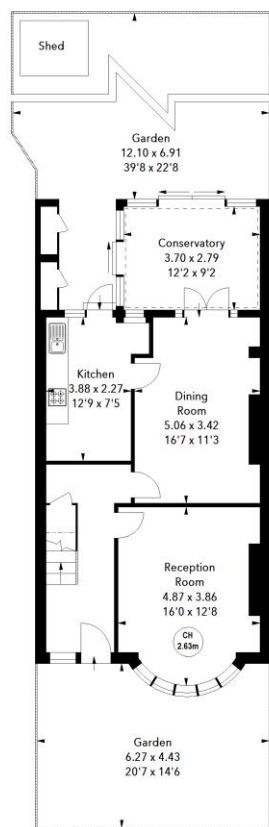
Available unfurnished immediately.



ADDITIONAL INFORMATION

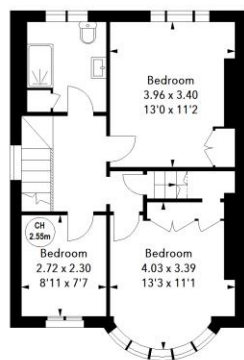
Offers	Available for a minimum term of 12 months longer terms will be considered
Viewing	Strictly by appointment
Local Authority	Richmond Borough Council - Council Tax Band F
EPC	E



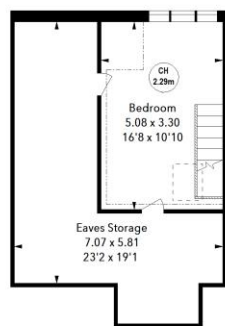


Ground Floor
Approx. 65.68 sq m / 707 sq ft

Key:
CH - Ceiling Height



First Floor
Approx. 48.22 sq m / 519 sq ft



Second Floor
Approx. 42.55 sq m / 458 sq ft

Tangier Road, TW10
Approximate Area = 156.44 sq m / 1684 sq ft
(Including Eaves Storage)
Eaves Storage = 24.80 sq m / 267 sq ft



The floor plan is not to scale and measurements and areas shown are approximate and therefore should be used for illustrative purposes only. The plan has been prepared in accordance with the RICS code of Measuring Practice and whilst we have confidence in the information produced, it must not be relied on. If there is any aspect of particular importance, you should carry out or commission your own inspection of the property.



T: 020 8878 1115

70 White Hart Lane, Barnes, SW13 0PZ

E: barnes@carterjonas.co.uk



Exclusive UK affiliate of

CHRISTIE'S
INTERNATIONAL REAL ESTATE

Classification L2 - Business Data

IMPORTANT INFORMATION

These particulars are for general information purposes only and do not represent an offer or contract or part of one. Carter Jonas or anyone in their employment has made every attempt to ensure that the particulars and other information provided are as accurate as possible and they are not intended to amount to advice on which you should rely as being factually accurate. Full information which may be relevant to your decision regarding the property can be found on the property listing on carterjonas.co.uk or a separately available material information sheet, and we would advise you to confirm the details of any material information prior to any offer being submitted. You should not assume that the property has all necessary planning, building regulations or other consents and Carter Jonas has not tested any services, facilities, or equipment. Any measurements and distances given are approximate only. Where Carter Jonas has been provided with a floorplan by a third party, we cannot guarantee that the floorplan has been measured in accordance with IPMS. Purchasers or prospective tenants must satisfy themselves of all of the aforementioned by independent inspection or otherwise. Our images only represent part of the property as it appeared at the time they were taken and do not represent the furnishings included; these are confirmed in a separate inventory. If you require further information, please contact us. *Administration fees may apply depending on tenancy type. Please contact your local branch for this information.