



COLD ASHTON, CHIPPENHAM, SN14 8JU
£3,250 per month*

Carter Jonas

A very attractive period detached 4 bedroom, 2 bathroom property which has been fully restored and decorated in a contemporary style in pretty Cold Ashton, 7 miles north of Bath.

- Dining Room
- Living Room
- Kitchen/dining room
- Utility Room
- 4 bedrooms
- 2 bathrooms
- Garden

THE PROPERTY

Manor Court is a very attractive period detached house fully restored and decorated in a contemporary style that successfully fuses modern living with period charm. Just seven miles north of central Bath and on the edge of the Cotswolds, being just 2 miles south of junction 18 of the M4, it offers great access to Bristol, Chippenham, Swindon and London. On the ground floor is a wonderful Sitting Room with woodburner and oak flooring, a fully fitted kitchen/breakfast room with electric "Everhot" range oven and hob, dishwasher and fridge with washing machine and tumble dryer in the utility room. There is also a cloakroom and boot room with freezer and back door to garden. The kitchen leads through to the Dining Room, large enough for a table with seating for eight. Stairs rise from the hallway to the first floor where you will find Master Bedroom, 2 further double bedrooms (one with en suite) and a large single bedroom. The En-suite: (for bedroom 2) has bath and shower overhead. There is a large family bathroom with bath and separate shower. The property is approached via gates which lead to a stoned courtyard at the front of the house where there is parking for up to 6 vehicles. There is an enclosed back garden with table and chairs. There is also use of a swimming pool and a tennis court that belongs to the landlord's property next door at The Manor House . EPC Band E Council Tax Band G

Oil CH

Available for an initial 12 month tenancy.

EPC Rating E. Council Tax Band G (please see South Glos County Council website for current cost)

Mains electric, and mains water.



Septic tank drainage, Oil heating,

Parking: Parking for at least 3 vehicles to the front exterior of the house and set behind a gated entrance which shares the driveway with the neighbouring property.

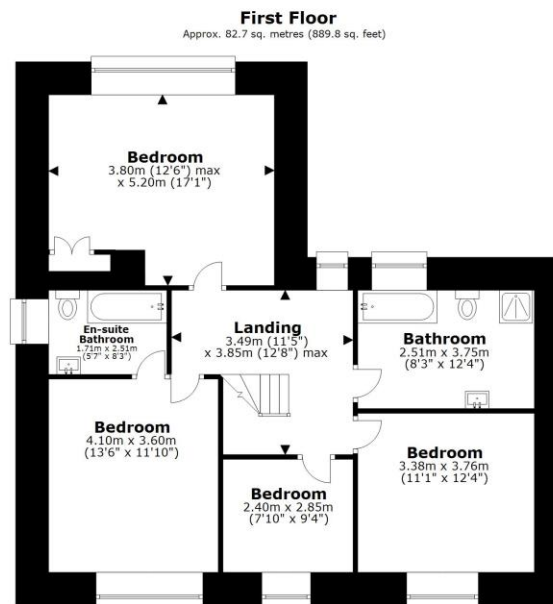
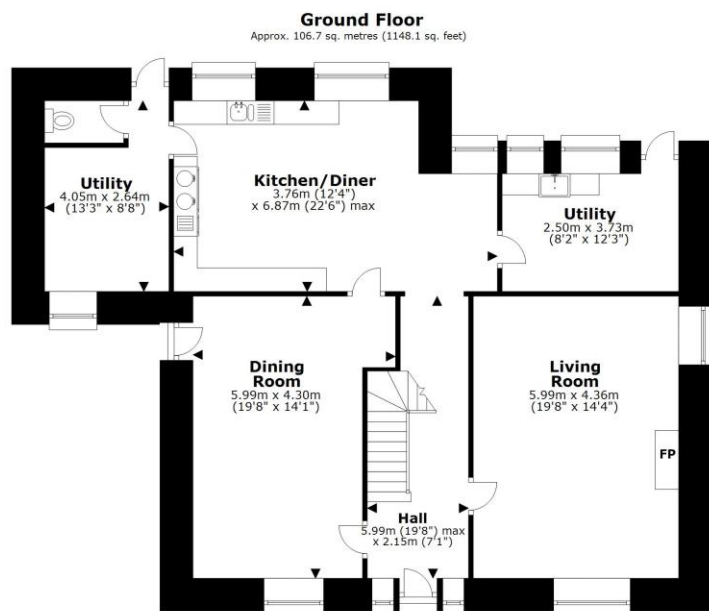
Internet & Mobile: Further information on availability and speeds can be found on the Ofcom website.

At a rent of £3,250 per calendar month: Holding deposit of 1 week's rent £750.00 (deducted from first month's rent) Security deposit of 5 weeks rent £3750.00

ADDITIONAL INFORMATION

Offers	Available for a minimum term of 12 months longer terms will be considered
Viewing	Strictly by appointment
Local Authority	- Council Tax Band G
Directions	



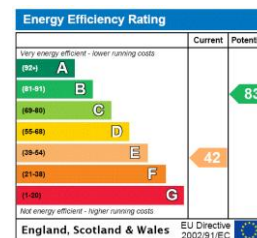


Total area: approx. 189.3 sq. metres (2038.0 sq. feet)

Every attempt has been made to ensure the accuracy of this floor plan, however measurement of doors, windows, rooms and any other items are approximate and no responsibility is taken for any error or omission. This plan is for illustrative purposes only and should be used as such by any prospective purchaser. www.fkphoto.co.uk

Plan produced using PlanUp.

Manor Court Farm, Cold Ashton



T: 01225 747250

5-6 Wood Street, Bath, Somerset, BA1 2JQ

E: bath@carterjonas.co.uk



Exclusive UK affiliate of

CHRISTIE'S
INTERNATIONAL REAL ESTATE

Classification L2 - Business Data

IMPORTANT INFORMATION

These particulars are for general information purposes only and do not represent an offer or contract or part of one. Carter Jonas or anyone in their employment has made every attempt to ensure that the particulars and other information provided are as accurate as possible and they are not intended to amount to advice on which you should rely as being factually accurate. Full information which may be relevant to your decision regarding the property can be found on the property listing on carterjonas.co.uk or a separately available material information sheet, and we would advise you to confirm the details of any material information prior to any offer being submitted. You should not assume that the property has all necessary planning, building regulations or other consents and Carter Jonas has not tested any services, facilities, or equipment. Any measurements and distances given are approximate only. Where Carter Jonas has been provided with a floorplan by a third party, we cannot guarantee that the floorplan has been measured in accordance with IPMS. Purchasers or prospective tenants must satisfy themselves of all of the aforementioned by independent inspection or otherwise. Our images only represent part of the property as it appeared at the time they were taken and do not represent the furnishings included; these are confirmed in a separate inventory. If you require further information, please contact us. *Administration fees may apply depending on tenancy type. Please contact your local branch for this information.