



BARTON BUILDINGS, BATH, BA1 2JR
£1,450 per month*

Carter Jonas

Exquisite one bedroom top floor apartment in central Bath offered furnished.

- Bedroom
- Open plan Living room/Kitchen
- Bathroom
- Offered Furnished
- Pedestrianised Street

THE PROPERTY

We are pleased to offer to the lettings market this exquisite top floor one bedroom apartment in central Bath. Set on a pedestrian street opposite Hall & Woodhouse, Barton Buildings offers beautifully furnished accommodation comprising Living room with open plan Kitchen, Bathroom with shower over bath and Double Bedroom. The apartment has been recently completely renovated and the kitchen has electric oven, fridge, separate freezer, and dishwasher. The washing machine is housed in a cupboard off the hallway. The apartment is offered furnished and the living room benefits from a sofabed/day bed in addition to a further sofa, small dining table, chair and TV unit. Very tastefully decorated, this is such a wonderful city home. Available from 1 March.

PLEASE NOTE NO PARKING PERMIT AVAILABLE AT THIS PROPERTY. Available for an initial 6 month tenancy - longer terms will be considered.

EPC Rating E. Council Tax Band A (please see Bath & North East Somerset website for current cost)

Mains electric, and mains water. Please note that electric, water, council tax, bt internet and TV licence will be included with the tenancy at an additional cost of £332 per month, paid to the Landlord.

Internet & Mobile: Further information on availability and speeds can be found on the Ofcom website.



At a rent of £1450.00 per calendar month, holding deposit of 1 week's rent £334.61 and security deposit of 5 weeks' rent £1,673.00

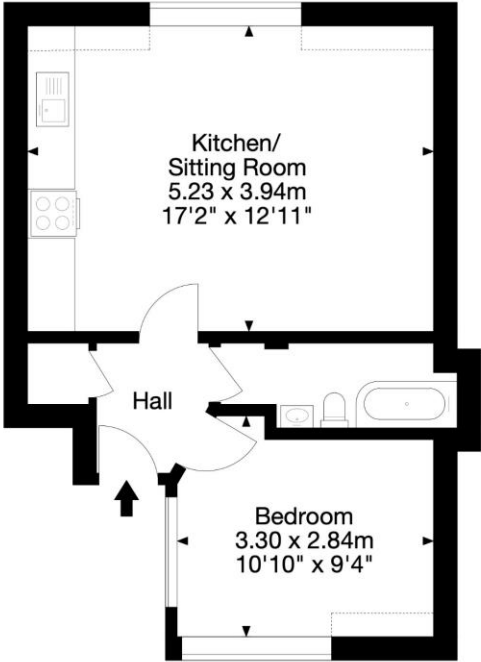
0

ADDITIONAL INFORMATION

Offers	Available for a minimum term of 12 months longer terms will be considered
Viewing	Strictly by appointment
Local Authority	Bath and North East Somerset, Bath - Council Tax Band A
Directions	

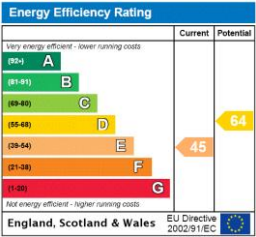


7 Barton Buildings, Bath BA1 2JR
Gross Internal Area (Approx.)
36 sq m / 393 sq ft



Third Floor

© Capture Property Marketing 2025. Drawn to RICS guidelines. Not drawn to scale.
Plan is for illustration purposes only. All features, door openings, and window locations are approximate.
All measurements and areas are approximate and should not be relied on as a statement of fact.



T: 01225 747250
5-6 Wood Street, Bath, Somerset, BA1 2JQ
E: bath@carterjonas.co.uk



Exclusive UK affiliate of
CHRISTIE'S
INTERNATIONAL REAL ESTATE

Classification L2 - Business Data

IMPORTANT INFORMATION

These particulars are for general information purposes only and do not represent an offer or contract or part of one. Carter Jonas or anyone in their employment has made every attempt to ensure that the particulars and other information provided are as accurate as possible and they are not intended to amount to advice on which you should rely as being factually accurate. Full information which may be relevant to your decision regarding the property can be found on the property listing on carterjonas.co.uk or a separately available material information sheet, and we would advise you to confirm the details of any material information prior to any offer being submitted. You should not assume that the property has all necessary planning, building regulations or other consents and Carter Jonas has not tested any services, facilities, or equipment. Any measurements and distances given are approximate only. Where Carter Jonas has been provided with a floorplan by a third party, we cannot guarantee that the floorplan has been measured in accordance with IPMS. Purchasers or prospective tenants must satisfy themselves of all of the aforementioned by independent inspection or otherwise. Our images only represent part of the property as it appeared at the time they were taken and do not represent the furnishings included; these are confirmed in a separate inventory. If you require further information, please contact us. *Administration fees may apply depending on tenancy type. Please contact your local branch for this information.