



**FLAT 3, ARGYLE STREET, BATH, BA2 4BA**  
£1,300 per month\*

**Carter Jonas**



## FLAT 3, ARGYLE STREET, BATH, SOMERSET, BA2 4BA

- Open plan kitchen/living room
- double bedroom
- shower room
- 

### THE PROPERTY

Charming one bedroom apartment in central Bath on Argyle Street beside the famous Pulteney Bridge. On the top floor of this Georgian building, the apartment offers light and space, and is offered part furnished. This well equipped and stylish apartment is just a 10 minute level walk from Bath Spa train station and surrounded by historic sites, lovely shops and a great choice of restaurants. The accommodation offers open plan living room/kitchen, double bedroom, and shower room. Perfect for a professional single or couple. REGRET NO STUDENTS. Available early May 2025. Council Tax Band C. EPC Band E. Holding deposit of one week's rent £300 (to be deducted from first month's rent). 5 weeks' deposit = £1500

Available for an initial 12 month tenancy.

(please see Bath & North East Somerset website for current cost)

Mains electric, and mains water.

Internet & Mobile: Further information on availability and speeds can be found on the Ofcom website.

Regret no parking permit available for this property.

Charming one bedroom top floor apartment in central Bath on Argyle Street beside the famous Pulteney Bridge.





---

## ADDITIONAL INFORMATION

---

Offers	Available for a minimum term of 12 months longer terms will be considered
--------	---

---

Viewing	Strictly by appointment
---------	-------------------------

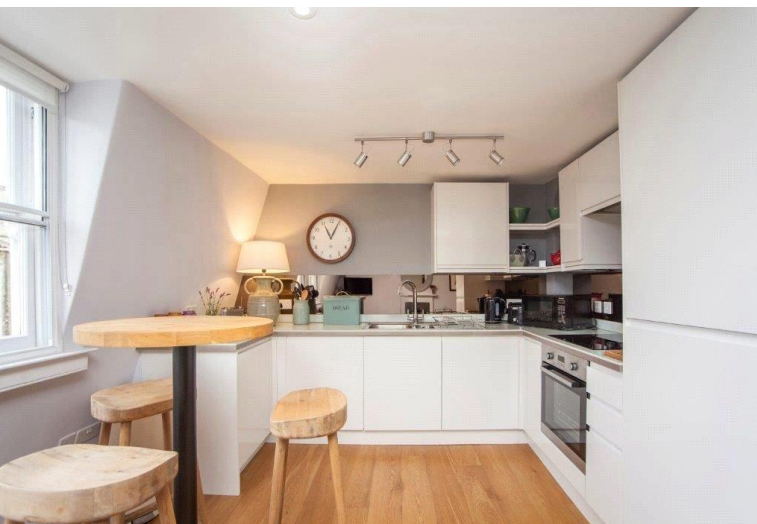
---

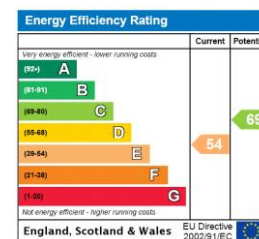
Local Authority	- Council Tax Band C
-----------------	----------------------

---

Directions	
------------	--

---





**T: 01225 747250**  
 5-6 Wood Street, Bath, Somerset, BA1 2JQ  
 E: bath@carterjonas.co.uk



*Exclusive UK affiliate of*  
**CHRISTIE'S**  
 INTERNATIONAL REAL ESTATE

Classification L2 - Business Data

### IMPORTANT INFORMATION

These particulars are for general information purposes only and do not represent an offer or contract or part of one. Carter Jonas or anyone in their employment has made every attempt to ensure that the particulars and other information provided are as accurate as possible and they are not intended to amount to advice on which you should rely as being factually accurate. Full information which may be relevant to your decision regarding the property can be found on the property listing on [carterjonas.co.uk](http://carterjonas.co.uk) or a separately available material information sheet, and we would advise you to confirm the details of any material information prior to any offer being submitted. You should not assume that the property has all necessary planning, building regulations or other consents and Carter Jonas has not tested any services, facilities, or equipment. Any measurements and distances given are approximate only. Where Carter Jonas has been provided with a floorplan by a third party, we cannot guarantee that the floorplan has been measured in accordance with IPMS. Purchasers or prospective tenants must satisfy themselves of all of the aforementioned by independent inspection or otherwise. Our images only represent part of the property as it appeared at the time they were taken and do not represent the furnishings included; these are confirmed in a separate inventory. If you require further information, please contact us. \*Administration fees may apply depending on tenancy type. Please contact your local branch for this information.