



MIDLAND ROAD, BATH, BA2 3GJ
£1,650 per month*

Carter Jonas

Carter Jonas

5 SOVEREIGN POINT, MIDLAND ROAD, BATH

- One bedroom
- One bathroom
- Furnished
- Balcony
- City Centre

THE PROPERTY

A very well presented one bedroom one bathroom apartment, situated on the first floor of Sovereign Point, in the highly desirable Bath Riverside development. Approached via a lift or stairs, the property is entered via a hallway with utilities cupboard housing a washing machine/dryer. On entering the living space, the property enjoys a light and spacious open plan living room, kitchen and dining area. The kitchen area includes integrated appliances, including a cooker, hob, fridge freezer, microwave, dishwasher and provides ample storage space with many attractive wall units. The generous dining and living area are the heart of the home with features French doors opening onto a balcony.

This apartment boasts a large double bedroom with built in wardrobes and there is also a large bathroom with shower over bath. A very smart city apartment perfect for a professional couple or single. The development enjoys convenient location with walking distance of 1 mile to the city centre and 1.4 miles to Bath Spa train station. Available for an initial 12-month tenancy. Available from 6th August.

A very well presented one bedroom one bathroom apartment, situated on the first floor of Sovereign Point, in the highly desirable Bath Riverside development.



Carter Jonas

EPC Rating B. Council Tax Band C (please see BANES website for current cost)

Mains electric and metered mains water.

Communal boilers run by EON (supplier cannot be changed).

Parking: no parking available

Internet & Mobile: Further information on availability and speeds can be found on the Ofcom website.

At a rent of £1,650 per calendar month:

Holding deposit of 1 week's rent £380.76

Security deposit of 5 weeks rent £1,903.80

ADDITIONAL INFORMATION

Offers	Available for a minimum term of 12 months longer terms will be considered
Viewing	Strictly by appointment
Local Authority	Bath and North East Somerset, Bath - Council Tax Band C



Carter Jonas



Carter Jonas



Carter Jonas



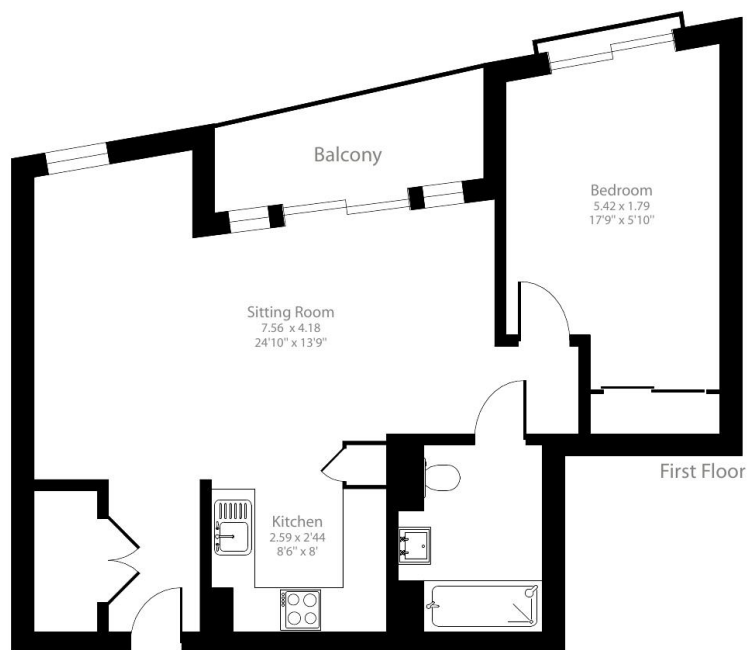
Carter Jonas



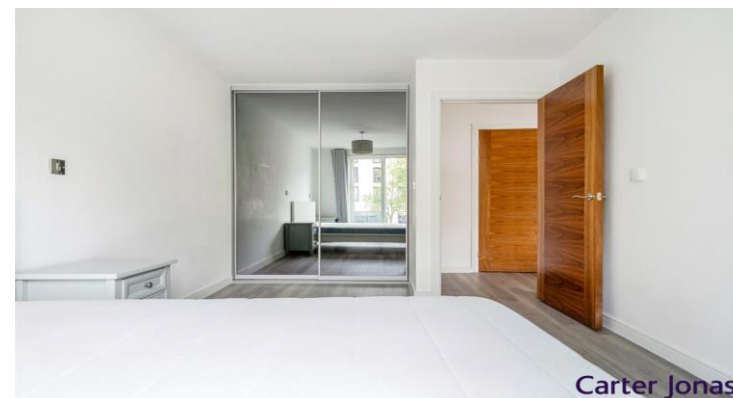
Sovereign Point, Midland Road, Bath, BA2

Approximate Area = 592 sq ft / 55 sq m

For identification only - Not to scale



Carter Jonas



Carter Jonas



Carter Jonas

Floor plan produced in accordance with RICS Property Measurement 2nd Edition, Incorporating International Property Measurement Standards (IPMS2 Residential). © nichecom 2025. Produced for Carter Jonas. REF: 1330492

Energy Efficiency Rating		
	Current	Potential
Very energy efficient - lower running costs		
(92-100) A		
(81-91) B	83	83
(69-80) C		
(55-68) D		
(39-54) E		
(21-38) F		
(1-20) G		
Not energy efficient - higher running costs		
England, Scotland & Wales EU Directive 2002/91/EC		

T: 01225 747250

5-6 Wood Street, Bath, Somerset, BA1 2JQ

E: bath@carterjonas.co.uk

A member of



Exclusive UK affiliate of

CHRISTIE'S
INTERNATIONAL REAL ESTATE

Classification L2 - Business Data

IMPORTANT INFORMATION

These particulars are for general information purposes only and do not represent an offer or contract or part of one. Carter Jonas or anyone in their employment has made every attempt to ensure that the particulars and other information provided are as accurate as possible and they are not intended to amount to advice on which you should rely as being factually accurate. Full information which may be relevant to your decision regarding the property can be found on the property listing on carterjonas.co.uk or a separately available material information sheet, and we would advise you to confirm the details of any material information prior to any offer being submitted. You should not assume that the property has all necessary planning, building regulations or other consents and Carter Jonas has not tested any services, facilities, or equipment. Any measurements and distances given are approximate only. Where Carter Jonas has been provided with a floorplan by a third party, we cannot guarantee that the floorplan has been measured in accordance with IPMS. Purchasers or prospective tenants must satisfy themselves of all of the aforementioned by independent inspection or otherwise. Our images only represent part of the property as it appeared at the time they were taken and do not represent the furnishings included; these are confirmed in a separate inventory. If you require further information, please contact us. *Administration fees may apply depending on tenancy type. Please contact your local branch for this information.