



BISHOPS MANSIONS, BISHOPS PARK ROAD, SW6
£950,000

Carter Jonas

BISHOPS MANSIONS, BISHOPS PARK ROAD, SW6

This delightful three bedroom, two bathroom flat is located in the sought after Bishops Mansions. EPC rating D.

This delightful ground floor flat comprises of a wide, south facing reception room with wooden floors and eat-in kitchen with direct access to beautiful communal gardens, three double bedrooms (one with fitted wardrobes and en-suite shower room) and a stylish family bathroom.

Bishops Mansions is a popular purpose built mansion building in Fulham, boasting an enviable location close to Fulham Palace, Bishops Park and the River Thames. There are many shops, restaurants and sports facilities (tennis courts and gym) in the area. Putney Bridge (0.6miles), on the District Line, is the closest underground station, and there are good bus services to all local areas.

THIS DELIGHTFUL THREE BEDROOM, TWO BATHROOM FLAT IS LOCATED IN THE SOUGHT AFTER BISHOPS MANSIONS. EPC RATING D.



AMENITIES

- Three Bedrooms
- Double Reception Room
- Modern Eat In Kitchen
- Bathroom
- En Suite Shower Room
- Communal Gardens

TENURE Share of Freehold

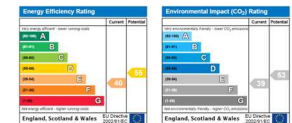
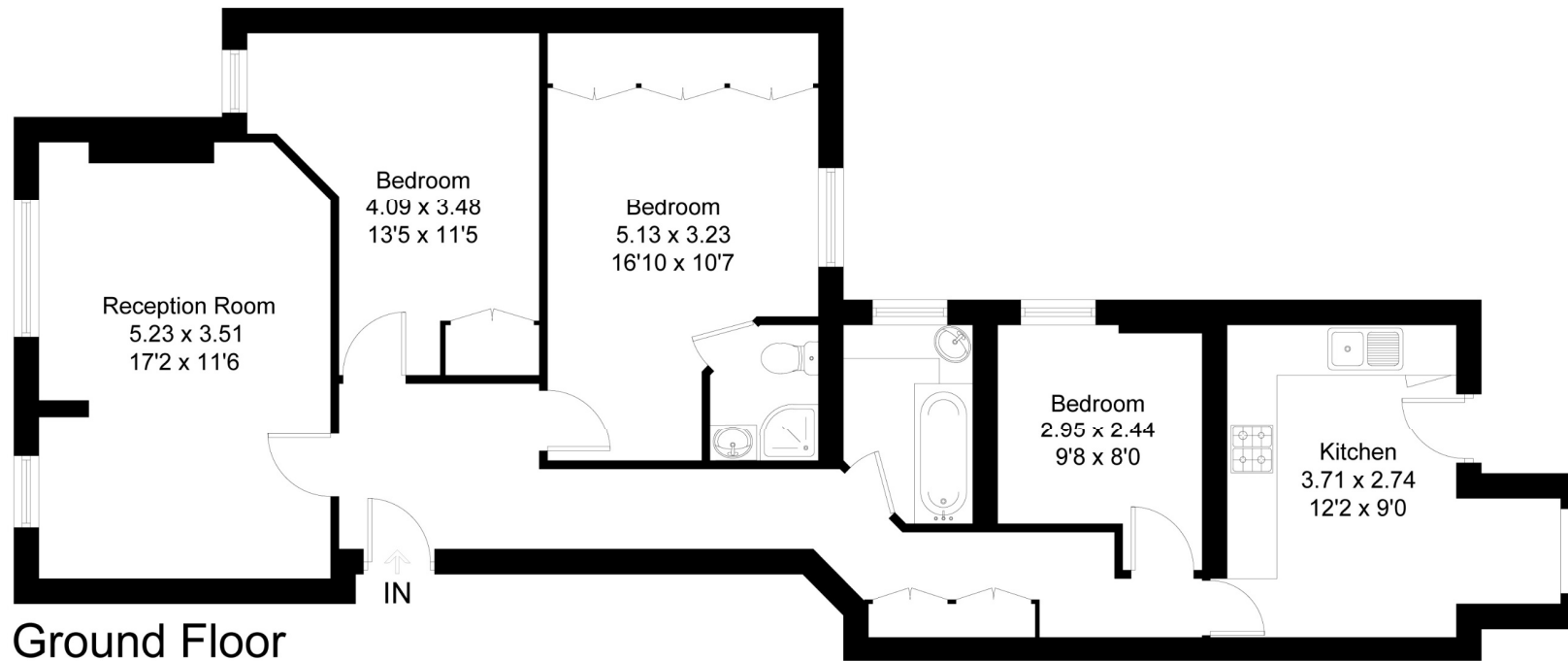
LOCAL AUTHORITY Hammersmith and Fulham

EPC BAND D





92 Bishops Mansion
Approximate Area = 938 sq ft / 87 sq m



Drawn for illustration and identification purposes only by @fourwalls-group.com #86746

Fulham 020 7731 3333

bishopspark@carterjonas.co.uk
361 Fulham Palace Road, London, SW6 6TA

carterjonas.co.uk
Offices throughout the UK

Exclusive UK affiliate of
CHRISTIE'S
INTERNATIONAL REAL ESTATE

IMPORTANT INFORMATION

These particulars are for general information purposes only and do not represent an offer or contract or part of one. Carter Jonas or anyone in their employment has made every attempt to ensure that the particulars and other information provided are as accurate as possible and they are not intended to amount to advice on which you should rely as being factually accurate. Full information which may be relevant to your decision regarding the property can be found on the property listing on carterjonas.co.uk or, (including off market properties) on the brochure or a separately available material information sheet. We would advise you to confirm the details of any material information prior to any offer being submitted. You should not assume that the property has all necessary planning, building regulations or other consents and Carter Jonas has not tested any services, facilities or equipment. Any measurements and distances given are approximate only. Where Carter Jonas has been provided with a floorplan by a third party, we cannot guarantee that the floorplan has been measured in accordance with IPMS. Purchasers must satisfy themselves of all of the aforementioned by independent inspection or otherwise. Our images only represent part of the property as it appeared at the time they were taken and do not represent the furnishings included; these are confirmed in a separate inventory. If you require further information, please contact us.