



TREVOR PLACE, KNIGHTSBRIDGE, SW7

£4,384.62 per week/£19,000 per month*

Carter Jonas

TREVOR PLACE, SW7

This is a beautifully presented five bedroom townhouse in the heart of Knightsbridge village. At almost 2700 sq ft over five floors this property offers abundant flexible accommodation and entertaining space. EPC rating: D Trevor Place is located a few minutes walk from the world-class boutiques of Sloane Street and Knightsbridge as well as Harrods and Harvey Nichols. the green spaces of Hyde Park are a short walk away too.

Reception, large kitchen/dining room, utility room, principal bedroom with walk-in wardrobe & en-suite bathroom, 4 further bedrooms, family bathroom with separate shower, shower room, cloakroom, patio. Furnished. Minimum term is 12 months

Holding deposit is 2 week's rent

Security deposit is 6 week's rent

Westminster City Council - Council tax band: H

For the latest information on broadband and mobile coverage, please visit the Ofcom website <https://checker.ofcom.org.uk/engb/broadband-coverage> for the most up-to-date details.

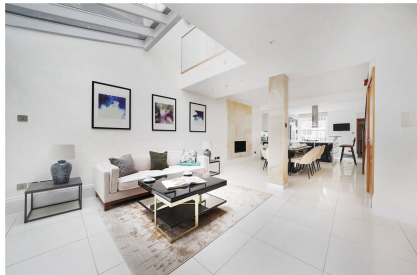
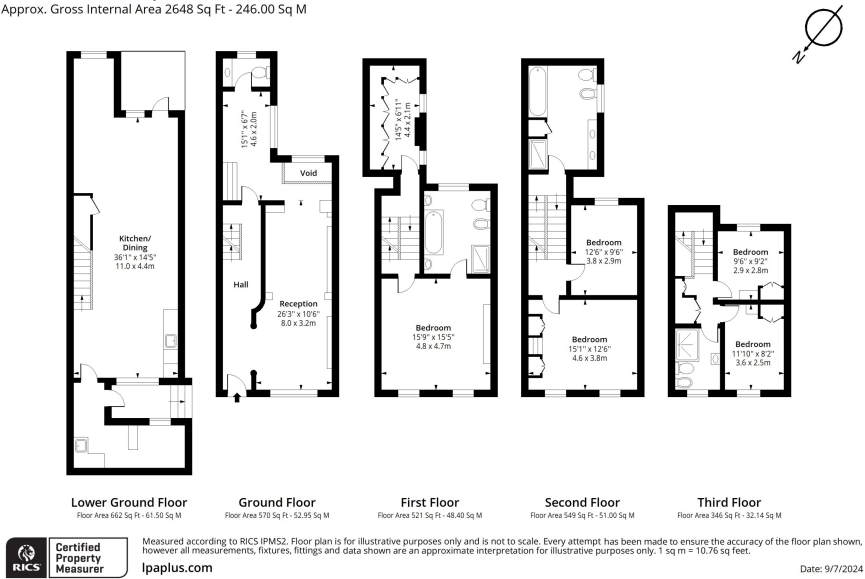
For eligibility for resident parking permits, please refer to the Westminster council website <https://www.westminster.gov.uk/parking> for further details.

- Council Tax Band = H
 - Deposit Required = £26,307.69
 - Long Let, Minimum term 12 months
- Knightsbridge underground
 - EPC = D
 - Furnished

Energy Efficiency Rating		Current	Potential
Very energy efficient - lower running costs			
(92-100) A			81
(81-91) B			
(69-80) C			64
(55-68) D			
(39-54) E			
(21-38) F			
(1-20) G			
Not energy efficient - higher running costs			
England, Scotland & Wales		EU Directive 2002/91/EC	

Trevor Place, SW7

Approx. Gross Internal Area 2648 Sq Ft - 246.00 Sq M



Kensington & Chelsea Lettings 020 7584 7020

chelsea@carterjonas.co.uk
25-27 Harrington Road, London, SW7 3EU



Classification L2 - Business Data

IMPORTANT INFORMATION

These particulars are for general information purposes only and do not represent an offer or contract or part of one. Carter Jonas or anyone in their employment has made every attempt to ensure that the particulars and other information provided are as accurate as possible and they are not intended to amount to advice on which you should rely as being factually accurate. Full information which may be relevant to your decision regarding the property can be found on the property listing on carterjonas.co.uk or a separately available material information sheet, and we would advise you to confirm the details of any material information prior to any offer being submitted. You should not assume that the property has all necessary planning, building regulations or other consents and Carter Jonas has not tested any services, facilities, or equipment. Any measurements and distances given are approximate only. Where Carter Jonas has been provided with a floorplan by a third party, we cannot guarantee that the floorplan has been measured in accordance with IPMS. Purchasers or prospective tenants must satisfy themselves of all of the aforementioned by independent inspection or otherwise. Our images only represent part of the property as it appeared at the time they were taken and do not represent the furnishings included; these are confirmed in a separate inventory. If you require further information, please contact us. *Administration fees may apply depending on tenancy type. Please contact your local branch for this information.