



**MANNINGFORD BOHUNE COMMON,  
PEWSEY**

**Carter Jonas**



## 2 MULLENS COTTAGES, MANNINGFORD BOHUNE COMMON, PEWSEY, WILTSHIRE, SN9 6LY

### AMENITIES

- Three bedrooms
- Bathroom
- Sitting room with open fire
- Kitchen
- Outbuilding with utility room
- Driveway parking and garage
- Extension potential (STPP)
- Rural location

### SITUATION

Manningford Bohune Common is a pretty hamlet at the end of a no-through road which forms part of the Manningfords, a cluster of local villages with the benefit of excellent views and access to both Salisbury Plain and the Marlborough Downs. Manningford Bohune Common lies under a mile from the popular village of Woodborough and approximately 3 ½ miles from the small market town of Pewsey which offers a good range of services for day-to-day needs together with a mainline train station with services to London Paddington.

The historic sites of Avebury Stone Circle and the White Horse at Alton Barnes are close by. The larger market town of Marlborough (about 9 miles) offers a wide range of facilities, and the larger centres of Salisbury, Andover, Newbury and Swindon are within easy striking distance. The M4 motorway lies to the north and the A303/M3 to the south. The surrounding area offers an extensive range of cultural and leisure pursuits with the Kennet and Avon canal running close by and a wealth of country walks on your doorstep.

### DESCRIPTION

2 Mullens Cottages is a three-bedroom semi-detached cottage set among a small collection of houses within a mile of the larger village of Woodborough.

Occupying a delightful rural position, this property is a blank canvas and offers significant scope for extension (STPP). From the garden, there is a small, covered porch and door leading to an inner hallway, off which there is a bathroom with shower overhead.

The kitchen is fitted with a range of floor and wall mounted units and leads through to the sitting room, which benefits from an open fireplace and high ceilings.

Stairs from the sitting room lead to the first floor where there are three bedrooms (one double and two singles), all of which enjoy original wooden floors.

Subject to obtaining the necessary consents, this property offers huge potential for extension, as can be seen from the works carried out to the adjoining property.

## AN ATTRACTIVE THREE BEDROOM SEMI-DETACHED HOUSE SITUATED IN A STUNNING RURAL LOCATION, OFFERING EXCELLENT EXTENSION POTENTIAL (STPP).



### OUTSIDE

The cottage is approached via its own driveway with ample space for car parking and a detached garage. There is also an outbuilding which has plumbing to use as a utility room.

The cottage sits in a large plot of c0.25 acres and enjoys a large garden which is mainly laid to lawn with a selection of mature trees and shrubs.

**GUIDE PRICE:** £400,000 (Subject to Contract)

**VIEWING ARRANGEMENTS:** By appointment with the Marlborough Office





Classification L2 - Business Data



# Mullens Cottages, Manningford Bohune Common, Pewsey, SN9

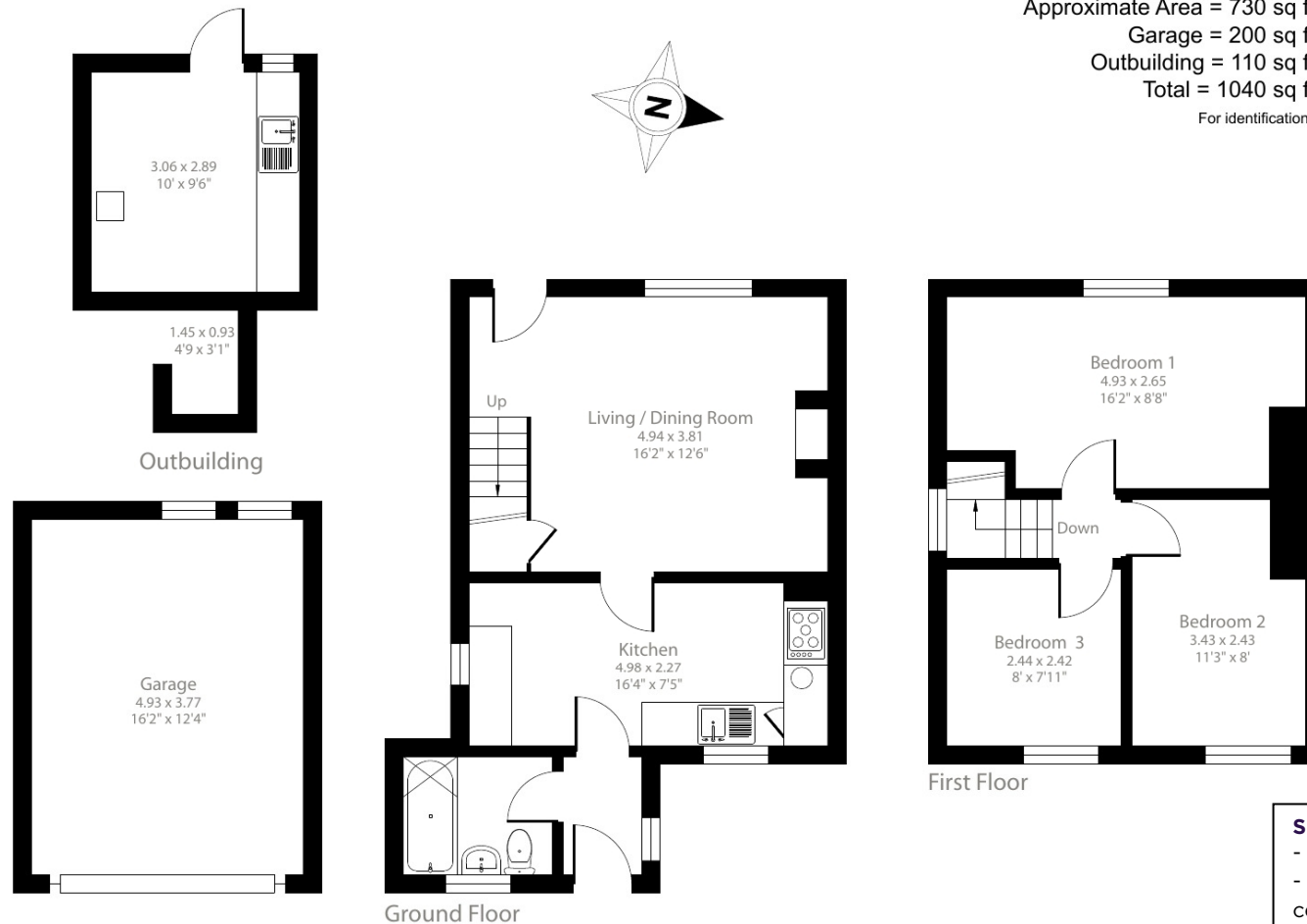
Approximate Area = 730 sq ft / 67.8 sq m

Garage = 200 sq ft / 18.5 sq m

Outbuilding = 110 sq ft / 10.2 sq m

Total = 1040 sq ft / 96.6 sq m

For identification only - Not to scale



## SERVICES AND MATERIAL INFORMATION

- Freehold
- Mains water, mains drainage. Oil fired central heating.
- Council tax band: C - <https://www.wiltshire.gov.uk/article/7069/Council-tax-bands-and-charges>
- Energy efficiency rating: E
- Broadband and mobile coverage. Please refer to <https://checker.ofcom.org.uk/>



Floor plan produced in accordance with RICS Property Measurement Standards incorporating International Property Measurement Standards (IPMS2 Residential). © nichecom 2024. Produced for Carter Jonas. REF: 1163160

**Marlborough 01672 514 916**  
93 High Street, Marlborough, SN8 1HD

**carterjonas.co.uk**  
Offices throughout the UK

## IMPORTANT INFORMATION

These particulars are for general information purposes only and do not represent an offer of contract or part of one. Carter Jonas has made every attempt to ensure that the particulars and other information provided are as accurate as possible and are not intended to amount to advice on which you should rely as being factually accurate. You should not assume that the property has all necessary planning, building regulations or other consents and Carter Jonas have not tested any services, facilities or equipment. Any measurements and distances given are approximate only. Purchasers must satisfy themselves of all of the aforementioned by independent inspection or otherwise. Although we make reasonable efforts to update our information, neither Carter Jonas LLP nor anyone in its employment or acting on its behalf makes any representations warranties or guarantees, whether express or implied, in relation to the property, or that the content in these particulars is accurate, complete or up to date. Our images only represent part of the property as it appeared at the time they were taken. If you require further information please contact us.

Classification L2 - Business Data