



SANDILANDS,
MARKET LAVINGTON

Carter Jonas

SANDILANDS, DROVE LANE, MARKET LAVINGTON, SN10 4NT

AMENITIES

- Detached
- Two bedrooms
- Scope for improvement
- Outline planning consented
- 3 Acres of land
- Quiet village location

SITUATION

Quietly situated off the bustling & historic village of Market Lavington, with the greater town of Devizes only 15 minutes away with full range of amenities; shops, doctors surgeries, supermarkets, pubs, chemist, butchers & banks. The area is very well served educationally, both state & private, with St Barnabas (nursery & primary), Daunsteys pre-school (primary) Lavington (secondary) & Dauntseys (secondary) all within a short distance, with Marlborough College (private) only 30mins away

The nearest railway station is Pewsey (25mins 12.5mi) away, to London Paddington, with Grateley for London Waterloo, a little farther at 40mins (25.5mi).

DESCRIPTION

A unique opportunity to acquire a double fronted villa in need of complete refurbishment (with outline planning consent) in a gloriously idyllic location set in approx. 3 acres.

Offered to the market for the first time in over 60 years, and the only house accessed off the byway, Sandilands presents the most wonderful opportunity to create a masterpiece, with outline planning consent to rebuild and incorporate the existing barn.

At nearly 1700 square feet within the property, there is plenty of space and scope to create a wonderful family home.

The outside space has been left to wild and offers a blank canvass for someone to create garden space, as well as having additional space for paddocking should one need.

A UNIQUE OPPORTUNITY TO ACQUIRE A DOUBLE FRONTED VILLA IN NEED OF COMPLETE REFURBISHMENT (WITH OUTLINE PLANNING CONSENT) IN A GLORIOUSLY IDYLIC LOCATION SET IN APPROX 3 ACRES.



OFFERS IN EXCESS OF: £550,000 (Subject to Contract)

VIEWING ARRANGEMENTS: By appointment with the Marlborough Office



Classification L2 - Business Data

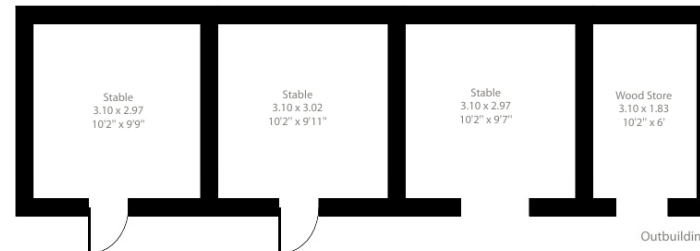
Drove Lane, Easterton Sands, Market Lavington, SN10

Approximate Area = 1689 sq ft / 156.9 sq m

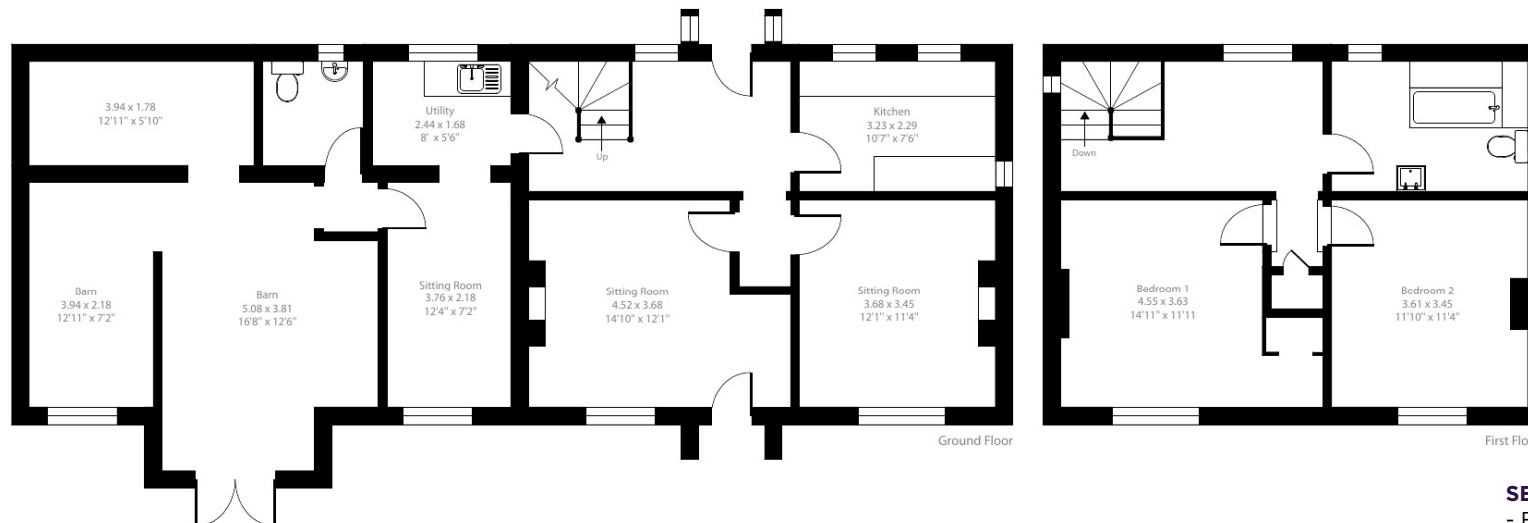
Outbuilding = 389 sq ft / 36.1 sq m

Total = 2078 sq ft / 193. sq m

For identification only - Not to scale



Denotes restricted head height



Floor plan produced in accordance with RICS Property Measurement 2nd Edition, Incorporating International Property Measurement Standards (IPMS2 Residential). © nchecon 2025. Produced for Carter Jonas. REF: 1248354

SERVICES AND MATERIAL INFORMATION

- Freehold
- Mains water, no current heating
- Council tax band: D
- Energy efficiency rating: G
- Broadband and mobile coverage. Please refer to Ofcom website

Marlborough 01672 514 916
93 High Street, Marlborough, SN8 1HD

carterjonas.co.uk
Offices throughout the UK

Exclusive UK affiliate of
CHRISTIE'S
INTERNATIONAL REAL ESTATE

IMPORTANT INFORMATION

These particulars are for general information purposes only and do not represent an offer or contract or part of one. Carter Jonas or anyone in their employment has made every attempt to ensure that the particulars and other information provided are as accurate as possible and they are not intended to amount to advice on which you should rely as being factually accurate. Full information which may be relevant to your decision regarding the property can be found on the property listing on carterjonas.co.uk or, (including off market properties) on the brochure or a separately available material information sheet. We would advise you to confirm the details of any material information prior to any offer being submitted. You should not assume that the property has all necessary planning, building regulations or other consents and Carter Jonas has not tested any services, facilities or equipment. Any measurements and distances given are approximate only. Where Carter Jonas has been provided with a floorplan by a third party, we cannot guarantee that the floorplan has been measured in accordance with IPMS. Purchasers must satisfy themselves of all of the aforementioned by independent inspection or otherwise. Our images only represent part of the property as it appeared at the time they were taken and do not represent the furnishings included; these are confirmed in a separate inventory. If you require further information, please contact us.

Classification L2 - Business Data