



RANELAGH GROVE, BELGRAVIA, SW1W
£3,395 per week*

Carter Jonas

RANELAGH GROVE, BELGRAVIA, LONDON, SW1W 8PD

- 3 Bedrooms
- 2 Reception Rooms
- 2 Bath/Shower Rooms & Guest WC
- Kitchen/Breakfast Room
- Private Patio Garden
- Furnished

Stunning Belgravia townhouse that has been fully refurbished throughout and is offered to rent long term, furnished to an incredibly high standard. Comprising three spacious bedrooms, two bathrooms, two large formal reception rooms, kitchen breakfast room, separate utility and laundry room, as well as wine cellar and vault storage. This charming home further benefits from a private patio garden, lots of natural light and a bright and airy feel throughout.

Belgravia is located slightly to the east of Knightsbridge and is the chosen location for embassies, international professionals and British alike. Bordered by Sloane Street on the west, Ebury Street to the south, Victoria station to the west and Hyde Park to the north, it is also the location of many of London's top hotels and as such draws varied, wealthy residents and an interesting mix of global visitors and part time inhabitants.

Nearest Tube: Sloane Square

NHA -The deposit will be £20,370 at a rental value of £3,395(asking price).

Holding deposit = 1 weeks rent of £3,395

Rent is not payable weekly

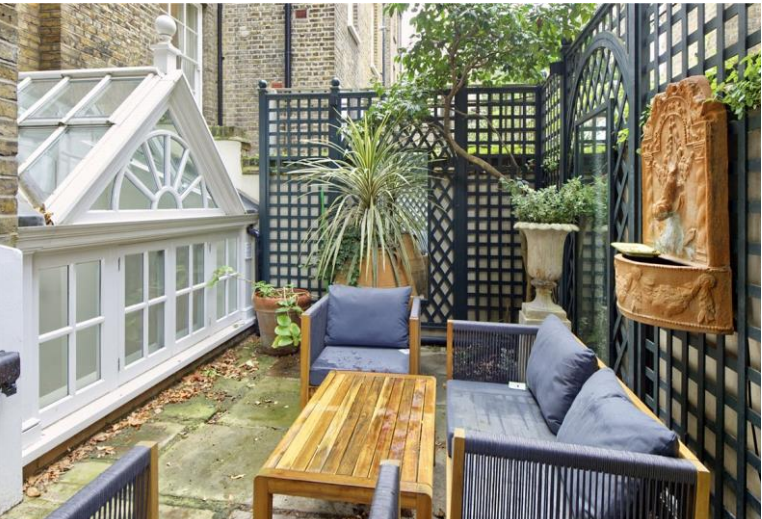
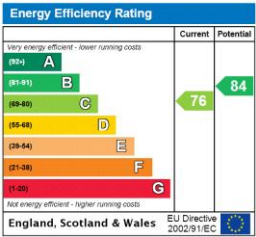
Deposit is 6 weeks rent (£3,395 pw = £20,370 deposit)

**Newly refurbished Belgravia townhouse tucked away near Pimlico Green,
spanning 2,165 square feet**



ADDITIONAL INFORMATION

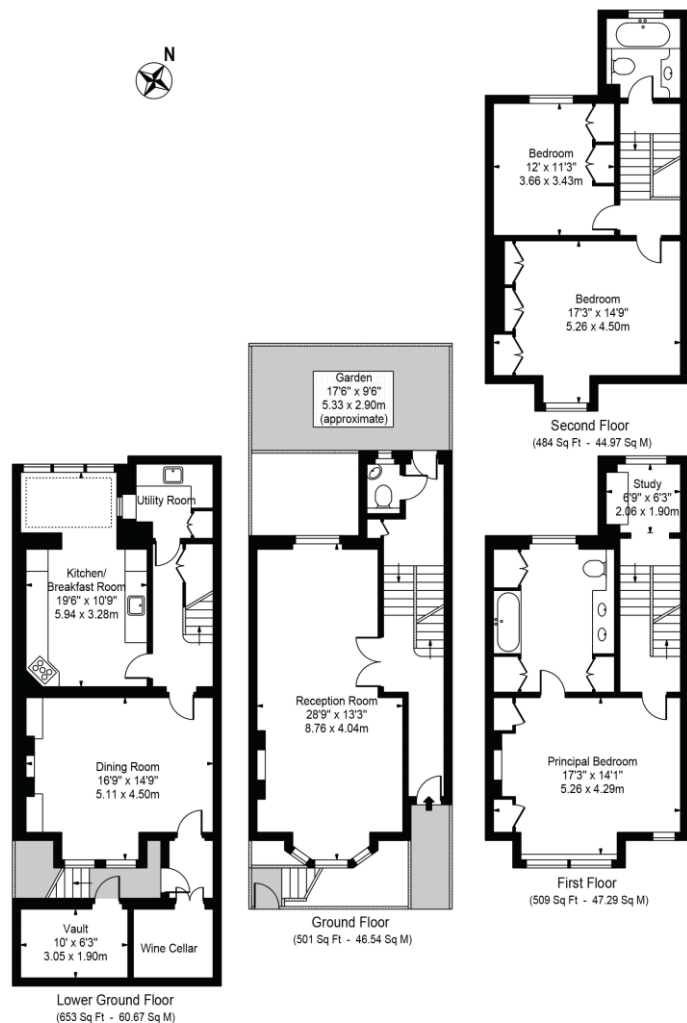
Offers	Available for a minimum term of 12 months longer terms will be considered
Viewing	Strictly by appointment
Local Authority	Westminster City Council - Council Tax Band H
Material Information	Copper broadband Mains gas and electric - boiler and underfloor heating for heating and hot water



Ranelagh Grove

Approx. Gross Internal Area 2147 Sq Ft - 199.46 Sq M
(Excluding Vault)

Approx. Gross Internal Area Of Vault 63 Sq Ft - 5.85 Sq M



For Illustration Purposes Only - Not To Scale



T: 020 7493 0676

18 Davies Street, Mayfair, London, W1K 3DS

E: mayfair@carterjonas.co.uk

A member of



Exclusive UK affiliate of

CHRISTIE'S
INTERNATIONAL REAL ESTATE

Classification L2 - Business Data

IMPORTANT INFORMATION

These particulars are for general information purposes only and do not represent an offer or contract or part of one. Carter Jonas or anyone in their employment has made every attempt to ensure that the particulars and other information provided are as accurate as possible and they are not intended to amount to advice on which you should rely as being factually accurate. Full information which may be relevant to your decision regarding the property can be found on the property listing on carterjonas.co.uk or a separately available material information sheet, and we would advise you to confirm the details of any material information prior to any offer being submitted. You should not assume that the property has all necessary planning, building regulations or other consents and Carter Jonas has not tested any services, facilities, or equipment. Any measurements and distances given are approximate only. Where Carter Jonas has been provided with a floorplan by a third party, we cannot guarantee that the floorplan has been measured in accordance with IPMS. Purchasers or prospective tenants must satisfy themselves of all of the aforementioned by independent inspection or otherwise. Our images only represent part of the property as it appeared at the time they were taken and do not represent the furnishings included; these are confirmed in a separate inventory. If you require further information, please contact us. *Administration fees may apply depending on tenancy type. Please contact your local branch for this information.