



**ST GEORGES COURT, GLOUCESTER ROAD, SW7**  
£3,300 per week\*

**Carter Jonas**



---

# ST GEORGES COURT, GLOUCESTER ROAD, LONDON, SW7 4RA

A four-bedroom apartment of approximately 1,798 square feet.

- Long Let
- Furnished
- 4 Bedrooms
- 1 Reception room
- 1 Kitchen
- 2 Bathrooms
- 1 Guest cloakroom

## THE PROPERTY

This bright and spacious apartment is situated on the fourth floor of this elegant Edwardian block with a lift and porter located within walking distance of Hyde Park and transport links.

The flat has been finished to a high standard and benefits from attractive period features and benefits from a large private garden for exclusive use of the residents.

## LOCATION

South Kensington is known as a popular tourist destination owing to the density of museums and cultural landmarks such as the Natural History Museum, the Geological Museum, the Science Museum, the Victoria and Albert Museum, London Oratory and the Lycée Français. Adjacent affluent areas such as Knightsbridge, Chelsea and Kensington, have been considered as some of the most exclusive real estate in the world.

Nearest Tube: Gloucester Road

NHA

The deposit will be £19,800 at a rental value of £3,300 (asking price)

Holding deposit = 1 weeks rent of £3,300

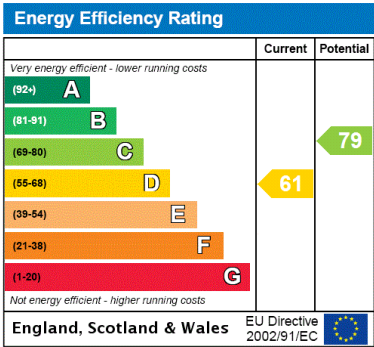
Deposit is 6 weeks rent (£3,3000 pw = £19,800 deposit)





ADDITIONAL INFORMATION

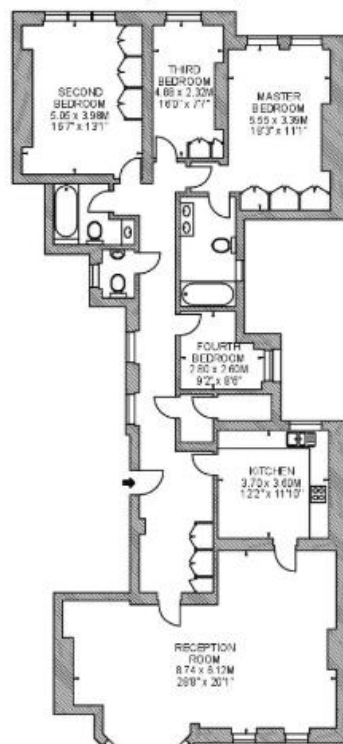
Offers	Available for a minimum term of 12 months longer terms will be considered
Viewing	Strictly by appointment
Local Authority	Kensington & Chelsea Borough Council - Council Tax Band H
Material Information	Boiler and radiators mains gas Mains electricity and water Ultrafast broadband and mobile coverage available





Flat 39  
Third Floor  
St. George's Court,  
Gloucester Road, SW7

Approximate gross internal area  
167 sq.m / 1798 sq.ft



Gloucester Road

Scale 1:150

Scale floor plans produced by Mays Floorplans Ltd. Tel 020 3397 4594  
All measurements are maximum, and include wardrobes and window sills where applicable



T: 020 7493 0676

18 Davies Street, Mayfair, London, W1K 3DS

E: mayfair@carterjonas.co.uk

A member of



Exclusive UK affiliate of

**CHRISTIE'S**  
INTERNATIONAL REAL ESTATE

Classification L2 - Business Data

### IMPORTANT INFORMATION

These particulars are for general information purposes only and do not represent an offer or contract or part of one. Carter Jonas or anyone in their employment has made every attempt to ensure that the particulars and other information provided are as accurate as possible and they are not intended to amount to advice on which you should rely as being factually accurate. Full information which may be relevant to your decision regarding the property can be found on the property listing on [carterjonas.co.uk](http://carterjonas.co.uk) or a separately available material information sheet, and we would advise you to confirm the details of any material information prior to any offer being submitted. You should not assume that the property has all necessary planning, building regulations or other consents and Carter Jonas has not tested any services, facilities, or equipment. Any measurements and distances given are approximate only. Where Carter Jonas has been provided with a floorplan by a third party, we cannot guarantee that the floorplan has been measured in accordance with IPMS. Purchasers or prospective tenants must satisfy themselves of all of the aforementioned by independent inspection or otherwise. Our images only represent part of the property as it appeared at the time they were taken and do not represent the furnishings included; these are confirmed in a separate inventory. If you require further information, please contact us. \*Administration fees may apply depending on tenancy type. Please contact your local branch for this information.