



NEWTON STREET, COVENT GARDEN, WC2B
£923.08 per week*

Carter Jonas

HEXAGON APARTMENTS, NEWTON STREET, COVENT GARDEN, LONDON, WC2B 5EL

A one-bedroom apartment of approximately 692 square feet

- Furnished
- 1 Bedroom
- Open plan kitchen / dining / reception room
- 1 Bathroom

THE PROPERTY

This spacious one-bedroom apartment is situated on the second floor of the new Hexagon Apartments with a lift and 24-hour concierge. It is located within walking distance of the heart of Covent Garden and its award-winning restaurants, shops and cafes and transport links.

LOCATION

Covent Garden is a popular shopping and tourist site located on the fringes of the West End. It is predominantly known for its famous Royal Opera House, home to the Royal Opera and Royal Ballet, central square with street performers, theatres restaurants and elegant buildings.

Nearest Tube: Holborn / Covent Garden

AST

The deposit will be £4,615.40 at a rental value of £923.08 (asking price)

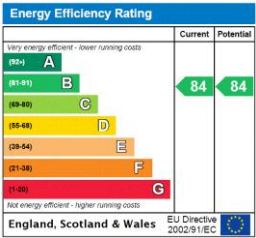
Holding deposit = 1 weeks rent of £923.08

Deposit is 5 weeks rent (£923.08 pw = £4,615.40 deposit)



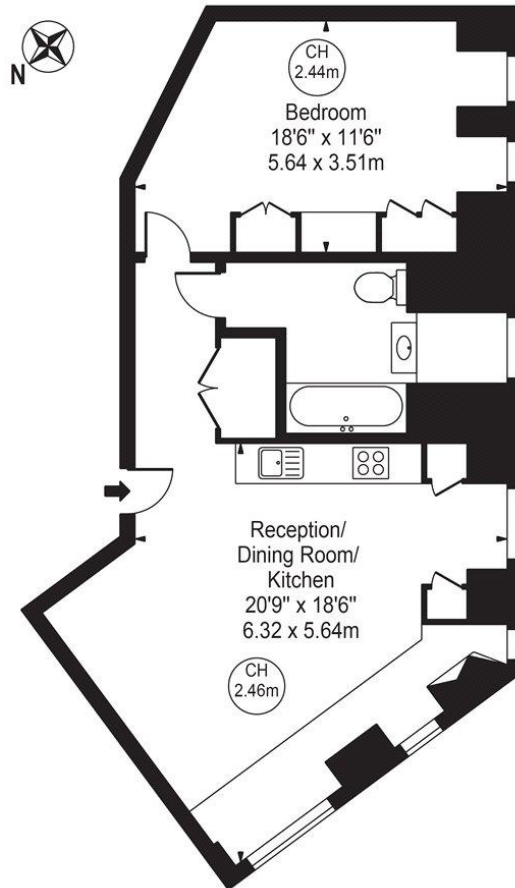
ADDITIONAL INFORMATION

Offers	Available for a minimum term of 12 months longer terms will be considered
Viewing	Strictly by appointment
Local Authority	Camden Council - Council Tax Band F
Material Information	Communal heating and hot water Ultrafast fibre to the premises



Hexagon Apartments

Approx. Gross Internal Area 692 Sq Ft - 64.29 Sq M



Second Floor

For Illustration Purposes Only - Not To Scale

This floor plan should be used as a general outline for guidance only and does not constitute in whole or in part an offer or contract. Any intending purchaser or lessee should satisfy themselves by inspection, searches, enquiries and full survey as to the correctness of each statement. Any areas, measurements or distances quoted are approximate and should not be used to value a property or be the basis of any sale or let.

T: 020 7493 0676

18 Davies Street, Mayfair, London, W1K 3DS

E: mayfair@carterjonas.co.uk



Exclusive UK affiliate of

CHRISTIE'S
INTERNATIONAL REAL ESTATE

Classification L2 - Business Data



IMPORTANT INFORMATION

These particulars are for general information purposes only and do not represent an offer or contract or part of one. Carter Jonas or anyone in their employment has made every attempt to ensure that the particulars and other information provided are as accurate as possible and they are not intended to amount to advice on which you should rely as being factually accurate. Full information which may be relevant to your decision regarding the property can be found on the property listing on carterjonas.co.uk or a separately available material information sheet, and you would advise you to confirm the details of any material information prior to any offer being submitted. You should not assume that the property has all necessary planning, building regulations or other consents and Carter Jonas has not tested any services, facilities, or equipment. Any measurements and distances given are approximate only. Where Carter Jonas has been provided with a floorplan by a third party, we cannot guarantee that the floorplan has been measured in accordance with IPMS. Purchasers or prospective tenants must satisfy themselves of all of the aforementioned by independent inspection or otherwise. Our images only represent part of the property as it appeared at the time they were taken and do not represent the furnishings included; these are confirmed in a separate inventory. If you require further information, please contact us. *Administration fees may apply depending on tenancy type. Please contact your local branch for this information.