



CHESTERFIELD HOUSE, SOUTH AUDLEY STREET, W1K
£950 per week*

Carter Jonas

CHESTERFIELD HOUSE, SOUTH AUDLEY STREET, LONDON, W1K

A one-bedroom apartment of approximately 716 square feet

- Furnished
- 1 Double bedroom
- 1 Reception room
- 1 Kitchen
- 1 Bathroom

THE PROPERTY

Situated on the first floor of a well-kept period building with lift and porter ideally located within walking distance of Hyde Park, transport links and the facilities of Shepherd Market, the apartment has been finished in a modern style.

LOCATION

Mayfair is London's most fashionable destination. With London's finest buildings, largest concentration of luxury hotels, best restaurants, bars, shopping, open spaces and hidden treasures all nestled together in a beautiful village setting.

Nearest Tube: Green Park / Hyde Park Corner.

AST

The deposit will be £4,750 at a rental value of £950 (asking price)

Holding deposit = 1 week's rent of £950

Deposit is 5 weeks rent (£950 pw = £4,750 deposit)

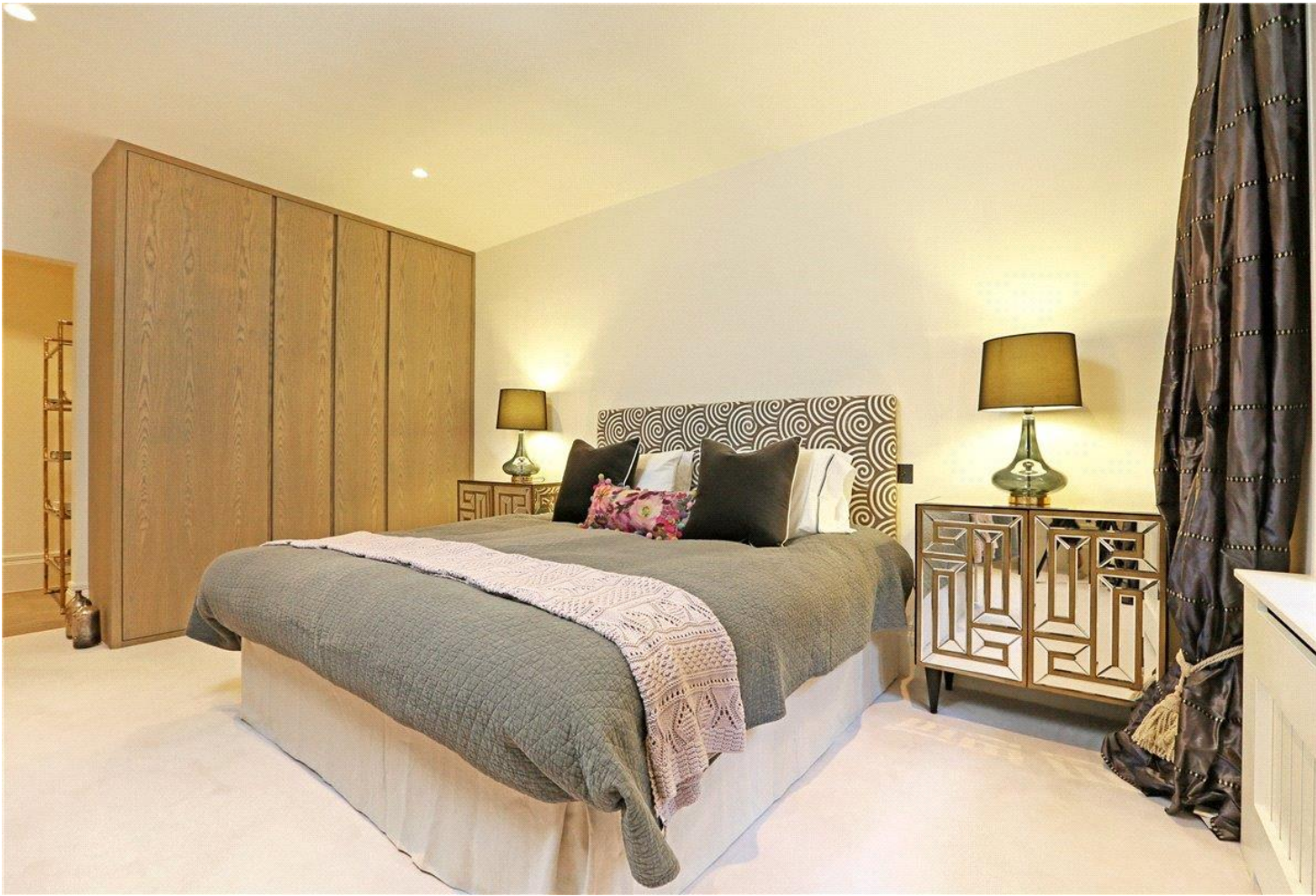
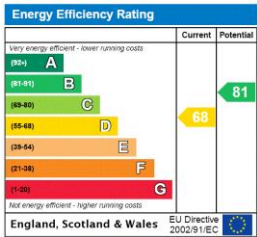
Council Tax Band F

Minimum term 12 months



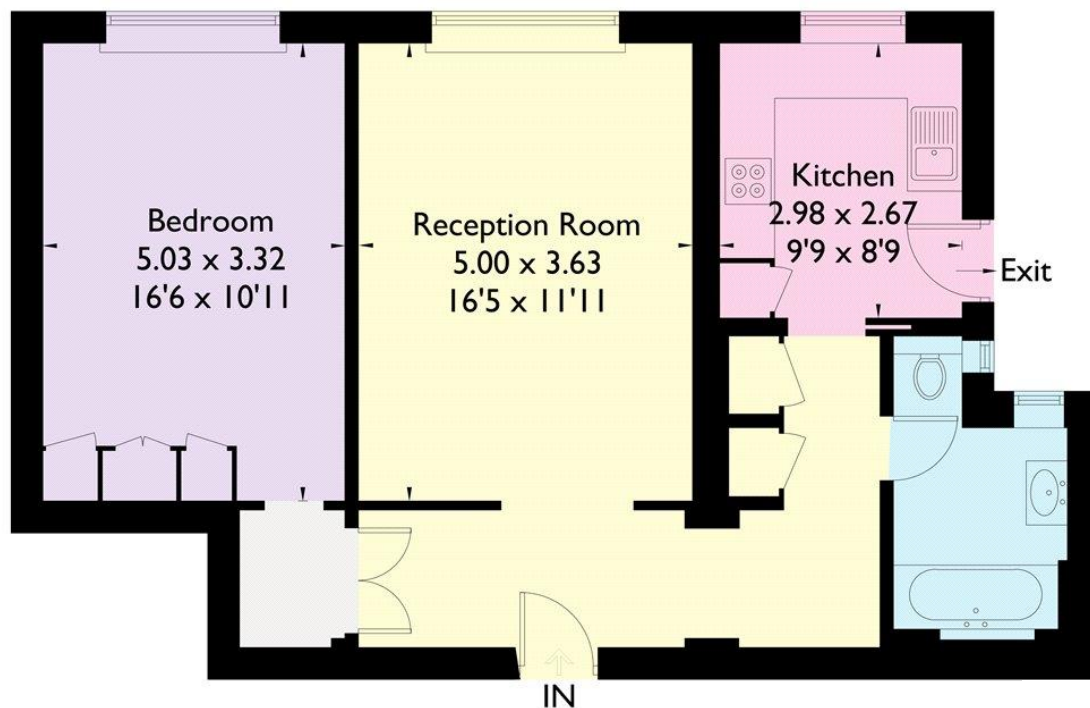
ADDITIONAL INFORMATION

Offers	Available for a minimum term of 12 months longer terms will be considered
Viewing	Strictly by appointment
Local Authority	Westminster County Council - Council Tax Band F
Material Information	Communal Heating and Hot Water Standard copper broadband and mobile coverage available



Flat 26, Chesterfield House, South Audley Street, W1K 1HA

Approximate Gross Internal Area = 66.5 sq m / 716 sq ft



First Floor

FLOORPLANZ © 2016 0845 6344080 Ref: 174703

This plan is for layout guidance only. Drawn in accordance with RICS guidelines. Not drawn to scale unless stated. Windows & door openings are approximate. Whilst every care is taken in the preparation of this plan, please check all dimensions, shapes & compass bearings before making any decisions reliant upon them.



T: 020 7493 0676

18 Davies Street, Mayfair, London, W1K 3DS

E: mayfair@carterjonas.co.uk

A member of



Exclusive UK affiliate of

CHRISTIE'S
INTERNATIONAL REAL ESTATE

Classification L2 - Business Data

IMPORTANT INFORMATION

These particulars are for general information purposes only and do not represent an offer or contract or part of one. Carter Jonas or anyone in their employment has made every attempt to ensure that the particulars and other information provided are as accurate as possible and they are not intended to amount to advice on which you should rely as being factually accurate. Full information which may be relevant to your decision regarding the property can be found on the property listing on carterjonas.co.uk or a separately available material information sheet, and we would advise you to confirm the details of any material information prior to any offer being submitted. You should not assume that the property has all necessary planning, building regulations or other consents and Carter Jonas has not tested any services, facilities, or equipment. Any measurements and distances given are approximate only. Where Carter Jonas has been provided with a floorplan by a third party, we cannot guarantee that the floorplan has been measured in accordance with IPMS. Purchasers or prospective tenants must satisfy themselves of all of the aforementioned by independent inspection or otherwise. Our images only represent part of the property as it appeared at the time they were taken and do not represent the furnishings included; these are confirmed in a separate inventory. If you require further information, please contact us. *Administration fees may apply depending on tenancy type. Please contact your local branch for this information.