



**WOODS MEWS, MAYFAIR, W1K**  
£1950 per week\*

**Carter Jonas**



---

# WOODS MEWS, MAYFAIR, LONDON, W1K 7DW

A two-bedroom maisonette of approximately 1,037 square feet

- Furnished
- 2 Bedrooms
- 2 En suite bathrooms
- Double-Height living room
- Open plan kitchen / reception room
- Private Patio Garden
- Air Conditioning

## THE PROPERTY

This bright maisonette is situated over the ground and basement of a purpose-built block located in a quiet mews within walking distance of Hyde Park, shopping facilities and transport links. The apartment has been finished to a high standard with solid wood flooring throughout, an exceptionally high ceiling to the reception room and galleried landing.

## LOCATION

Mayfair is London's most fashionable destination. With London's finest buildings, largest concentration of luxury hotels, best restaurants, bars, shopping, open spaces and hidden treasures all nestled together in a beautiful village setting.

Nearest Tube: Bond Street / Marble Arch

AST

The deposit will be £11,700 at a rental value of £1,950 (asking price)

Holding deposit = 1 weeks rent of £1,950

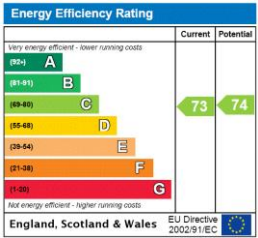
Deposit is 5 weeks rent (£1,950 pw = £11,700 deposit)





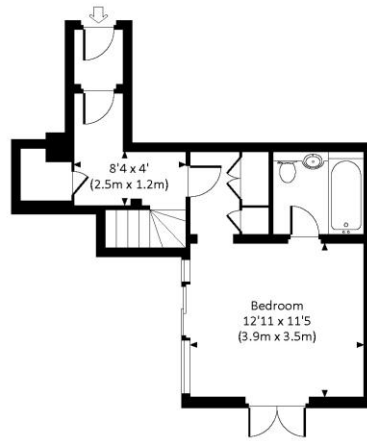
ADDITIONAL INFORMATION

Offers	Available for a minimum term of 12 months longer terms will be considered
Viewing	Strictly by appointment
Local Authority	Westminster County Council - Council Tax Band G
Material Information	Gas central heating and hot water Superfast Fibre to the Cabinet broadband and mobile coverage available

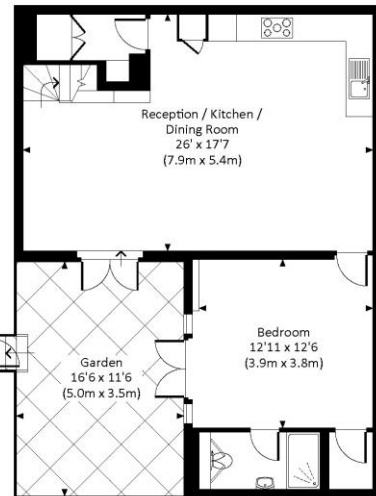


## WOODS MEWS, W1K

Approx. gross internal area  
1037 Sq Ft. / 96.3 Sq M.



GROUND FLOOR



LOWER GROUND FLOOR

All measurements have been made in accordance with RICS Code of Measuring Practice which are approximate only and only for illustrative purposes. For the avoidance of doubt, Dowling Jones Design shall not be liable for any reliance on these measurements. © 2015 www.dowlingjones.com 020 7610 9933



**T: 020 7493 0676**

18 Davies Street, Mayfair, London, W1K 3DS

E: [mayfair@carterjonas.co.uk](mailto:mayfair@carterjonas.co.uk)



*Exclusive UK affiliate of*

**CHRISTIE'S**  
INTERNATIONAL REAL ESTATE

Classification L2 - Business Data

### IMPORTANT INFORMATION

These particulars are for general information purposes only and do not represent an offer or contract or part of one. Carter Jonas or anyone in their employment has made every attempt to ensure that the particulars and other information provided are as accurate as possible and they are not intended to amount to advice on which you should rely as being factually accurate. Full information which may be relevant to your decision regarding the property can be found on the property listing on [carterjonas.co.uk](http://carterjonas.co.uk) or a separately available material information sheet, and we would advise you to confirm the details of any material information prior to any offer being submitted. You should not assume that the property has all necessary planning, building regulations or other consents and Carter Jonas has not tested any services, facilities, or equipment. Any measurements and distances given are approximate only. Where Carter Jonas has been provided with a floorplan by a third party, we cannot guarantee that the floorplan has been measured in accordance with IPMS. Purchasers or prospective tenants must satisfy themselves of all of the aforementioned by independent inspection or otherwise. Our images only represent part of the property as it appeared at the time they were taken and do not represent the furnishings included; these are confirmed in a separate inventory. If you require further information, please contact us. \*Administration fees may apply depending on tenancy type. Please contact your local branch for this information.