



ST CHRISTOPHER'S PLACE, MARYLEBONE, W1U
£900 per week*

Carter Jonas

FLAT 48 ST CHRISTOPHER'S HOUSE, ST CHRISTOPHER'S PLACE, MARYLEBONE, LONDON, W1U 1NZ

- 1 Reception Room
- 2 Bedrooms
- 2 Bathrooms
- Upper Floor with Lift
- Rent Includes Utilities
- Furnished
- Prime location

THE PROPERTY

Each of these luxury apartments has a private entrance, hallway, fully equipped modern kitchen, sitting room with dining area and desk, two bathrooms and two double bedrooms.

All the apartments have double glazing throughout and full controllable air-conditioning in all bedrooms. The development, formerly run as serviced apartments, benefits from onsite property management.

To make life easier for tenants, electricity, gas, water and broadband are all included within the rent.

Nestled in the heart of London's vibrant West End, St Christopher's Place offers an unparalleled living experience.

This prestigious pedestrian only street has an array of boutiques and dining options which creates a unique neighbourhood and atmosphere.

With Bond Street station nearby, as well as numerous bus routes, the area is exceptionally well-connected, making commuting and travel effortless.

Offered for long term rental on a furnished basis.

Holding deposit is 1 weeks rent (£900 based on the asking price).

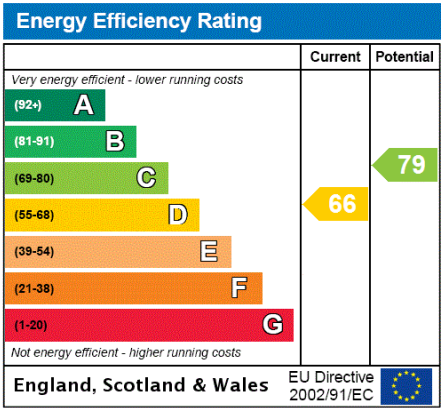
Rent Inclusive of Bills. A spacious and welcoming two-bedroom furnished apartment, beautifully decorated to a high standard, situated in a prime location.



Security deposit is 5 weeks rent (£900pw = £4,500 deposit based on the asking price).

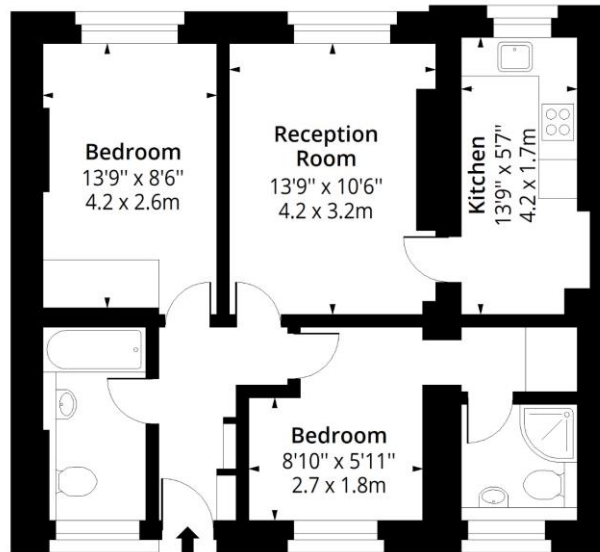
ADDITIONAL INFORMATION

Offers	Available for a minimum term of 12 months longer terms will be considered
Viewing	Strictly by appointment
Local Authority	Westminster City Council - Council Tax Band G



St Christopher's House, W1

Approx. Gross Internal Area 664 Sq Ft - 61.69 Sq M



Fourth Floor

Floor Area 664 Sq Ft - 61.69 Sq M



Measured according to RICS IPMS2. Floor plan is for illustrative purposes only and is not to scale. Every attempt has been made to ensure the accuracy of the floor plan shown, however all measurements, fixtures, fittings and data shown are an approximate interpretation for illustrative purposes only. 1 sq m = 10.76 sq feet.

lpaplus.com

Date: 21/10/2024



T: 020 7486 8866

37 New Cavendish Street, London, W1G 9TL

E: marylebone.lettings@carterjonas.co.uk

A member of



Exclusive UK affiliate of

CHRISTIE'S
INTERNATIONAL REAL ESTATE

Classification L2 - Business Data

IMPORTANT INFORMATION

These particulars are for general information purposes only and do not represent an offer or contract or part of one. Carter Jonas or anyone in their employment has made every attempt to ensure that the particulars and other information provided are as accurate as possible and they are not intended to amount to advice on which you should rely as being factually accurate. Full information which may be relevant to your decision regarding the property can be found on the property listing on carterjonas.co.uk or a separately available material information sheet, and we would advise you to confirm the details of any material information prior to any offer being submitted. You should not assume that the property has all necessary planning, building regulations or other consents and Carter Jonas has not tested any services, facilities, or equipment. Any measurements and distances given are approximate only. Where Carter Jonas has been provided with a floorplan by a third party, we cannot guarantee that the floorplan has been measured in accordance with IPMS. Purchasers or prospective tenants must satisfy themselves of all of the aforementioned by independent inspection or otherwise. Our images only represent part of the property as it appeared at the time they were taken and do not represent the furnishings included; these are confirmed in a separate inventory. If you require further information, please contact us. *Administration fees may apply depending on tenancy type. Please contact your local branch for this information.