



GREAT PORTLAND STREET, MARYLEBONE, W1W
£1,250 per week*

Carter Jonas

FLAT 6, THE ARMITAGE APARTMENTS, GREAT PORTLAND STREET, MARYLEBONE, LONDON, W1W 5QJ

- 2 Bedrooms
- 2 Reception Room
- 2 Bathrooms
- Weekly Housekeeping (1x per week)
- Access to Exclusive Residents' Gym
- Daytime Concierge
- 24 Hour CCTV
- Fast WIFI Included
- Sky HD TV

THE PROPERTY

This two-bedroom apartment comprises climate control, plasma TV screens with surround sound system and DVD player, all modern kitchen appliances and use of a gymnasium, sauna and jacuzzi.

Complimentary services included within this are a weekly housekeeping service (including linen and towel change), Sky HD TV, Fibre Optic Broadband (WIFI) and access to the private residents' gym- access via bookings.

Rate based on 12+ month contract. EXCLUSIVE of council tax (flexible terms available)

Available for long term rental on a furnished basis.

*£1,250pw (+ £90pw for utility bills, Excluding council tax)

Holding deposit is 1 week's rent = £1,250 (at asking price)

Security deposit is 6 week's rent = £7,500 (at asking price £1,250pw)

Minimum Term 12 months

Council Tax Band E

An unparalleled living experience offering luxurious amenities and high specification living within Great Portland Street.



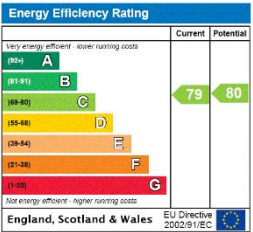
For the latest information on broadband and mobile coverage, please visit /checker.ofcom for the most up-to-date details.

Great Portland Street is a vibrant thoroughfare in London, known for its mix of shops, eateries, and cultural attractions, Situated in the heart of the city. It serves as a vibrant hub for locals and visitors alike. The area benefits from excellent transport links, with the Great Portland Street, Regent's Park, and Warren Street tube stations in proximity. These well-connected stations facilitate seamless travel, allowing residents and tourists to explore the city effortlessly.

Marylebone still looks and feels something like the village it was 400 years ago and the handsome Georgian development it was 250 years ago. Its High Street in particular is a pleasure to visit; the atmosphere is a bit more cosmopolitan than other parts of the city, and at the same time, a little more relaxed. A pristine haven a short walk from Oxford Circus filled with squares of tall, beautifully proportioned Georgian houses.

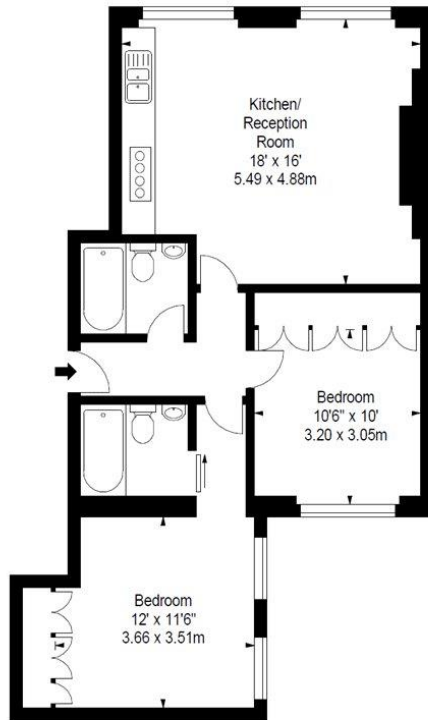
ADDITIONAL INFORMATION

Offers	Available for a minimum term of 12 months longer terms will be considered
Viewing	Strictly by appointment
Local Authority	Westminster City Council - Council Tax Band E



Two Bed,
206 GREAT PORTLAND STREET, W1
Approx. Gross Internal Area *
715 Ft² - 66.42 M²

Illustration For Identification Purposes Only, Not to Scale
* As Defined by RICS - Code of Measuring Practice



FOURTH FLOOR

BKR
FLOORPLANS

www.bkrfloorplans.co.uk
T: 0845 257 2023
2009

T: 020 7486 8866

37 New Cavendish Street, London, W1G 9TL

E: marylebone.lettings@carterjonas.co.uk

A member of



Exclusive UK affiliate of

CHRISTIE'S
INTERNATIONAL REAL ESTATE

Classification L2 - Business Data



IMPORTANT INFORMATION

These particulars are for general information purposes only and do not represent an offer or contract or part of one. Carter Jonas or anyone in their employment has made every attempt to ensure that the particulars and other information provided are as accurate as possible and they are not intended to amount to advice on which you should rely as being factually accurate. Full information which may be relevant to your decision regarding the property can be found on the property listing on carterjonas.co.uk or a separately available material information sheet, and we would advise you to confirm the details of any material information prior to any offer being submitted. You should not assume that the property has all necessary planning, building regulations or other consents and Carter Jonas has not tested any services, facilities, or equipment. Any measurements and distances given are approximate only. Where Carter Jonas has been provided with a floorplan by a third party, we cannot guarantee that the floorplan has been measured in accordance with IPMS. Purchasers or prospective tenants must satisfy themselves of all of the aforementioned by independent inspection or otherwise. Our images only represent part of the property as it appeared at the time they were taken and do not represent the furnishings included; these are confirmed in a separate inventory. If you require further information, please contact us. *Administration fees may apply depending on tenancy type. Please contact your local branch for this information.