



**DEVONSHIRE PLACE, MARYLEBONE, W1G**  
£11,000 per week\*

**Carter Jonas**

# DEVONSHIRE PLACE, MARYLEBONE, LONDON, W1G 6HF

- 7-8 Bedrooms
- 8 Bathrooms
- 4 Reception rooms
- Terrace
- Parking
- Lift

## LOCATION

Devonshire Place is located within close proximity to the local amenities and restaurants of Marylebone High Street as well as the green open spaces of Regent's Park. Excellent transport links are provided by Baker Street and Great Portland Street stations.

## THE PROPERTY

An exceptional naturally lit, five storey Georgian town house located in one of central London's most enviable locations, close to Regents Park.

This property holds all the classical features of a period property with high ceilings, large windows, original fireplaces, excellent proportions and ornate detailing.

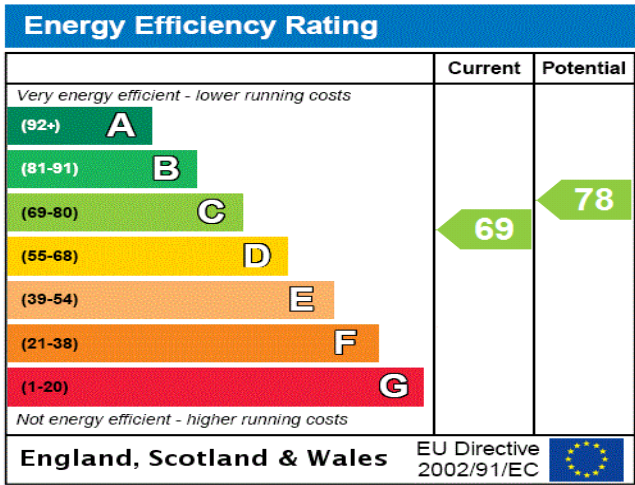
Further benefits of the property include a terrace situated on the fifth floor, lift access throughout, garage with private parking, multiple balconies, air conditioning and fibre broadband.

A stunning Georgian townhouse in central London, spanning five storeys (lift) with over 6,000 sq. ft. of space.



ADDITIONAL INFORMATION

Offers	Available for a minimum term of 12 months longer terms will be considered
Viewing	Strictly by appointment
Local Authority	Westminster City Council - Council Tax Band H



# Devonshire Place, W1G

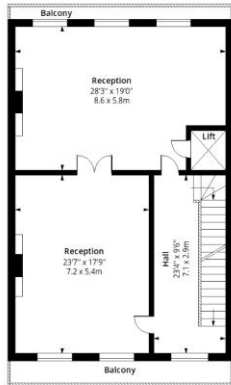
Approx. Gross Internal Area 6178 Sq Ft - 573.94 Sq M

Approx. Gross Balcony Area 134 Sq Ft - 12.45 Sq M

Approx. Gross Terrace Area 82 Sq Ft - 7.62 Sq M



**Ground Floor**  
Floor Area 1337 Sq Ft - 124.21 Sq M



**First Floor**  
Floor Area 1208 Sq Ft - 112.22 Sq M



**Second Floor**  
Floor Area 1212 Sq Ft - 112.59 Sq M



**Third Floor**  
Floor Area 1206 Sq Ft - 112.04 Sq M



**Fourth Floor**  
Floor Area 1215 Sq Ft - 112.87 Sq M



Measured according to RICS IPMS2. Floor plan is for illustrative purposes only and is not to scale. Every attempt has been made to ensure the accuracy of the floor plan shown, however all measurements, fixtures, fittings and data shown are an approximate interpretation for illustrative purposes only. 1 sq m = 10.76 sq feet.

lpaplus.com

Date: 23/10/2024



**T: 020 7486 8866**

37 New Cavendish Street, London, W1G 9TL

E: marylebone.lettings@carterjonas.co.uk

*Exclusive UK affiliate of*

**CHRISTIE'S**  
INTERNATIONAL REAL ESTATE

Classification L2 - Business Data

## IMPORTANT INFORMATION

These particulars are for general information purposes only and do not represent an offer or contract or part of one. Carter Jonas or anyone in their employment has made every attempt to ensure that the particulars and other information provided are as accurate as possible and they are not intended to amount to advice on which you should rely as being factually accurate. Full information which may be relevant to your decision regarding the property can be found on the property listing on [carterjonas.co.uk](http://carterjonas.co.uk) or a separately available material information sheet, and we would advise you to confirm the details of any material information prior to any offer being submitted. You should not assume that the property has all necessary planning, building regulations or other consents and Carter Jonas has not tested any services, facilities, or equipment. Any measurements and distances given are approximate only. Where Carter Jonas has been provided with a floorplan by a third party, we cannot guarantee that the floorplan has been measured in accordance with IPMS. Purchasers or prospective tenants must satisfy themselves of all of the aforementioned by independent inspection or otherwise. Our images only represent part of the property as it appeared at the time they were taken and do not represent the furnishings included; these are confirmed in a separate inventory. If you require further information, please contact us. \*Administration fees may apply depending on tenancy type. Please contact your local branch for this information.