



MARKET PLACE, SOHO, W1W
£1,475 per week*

Carter Jonas

FLAT 9 ORWELL STUDIOS, MARKET PLACE, SOHO, LONDON, W1W 8ER

- Penthouse
- 2 Bedrooms
- 1 en-suite bathroom
- 1 Bathrooms
- 1 Open plan kitchen / reception room
- Prime location

THE PROPERTY

This bright penthouse apartment is located on the fifth floor of a small, prestigious residential building with lift.

The property is filled with natural light and boasts high-quality finishes. It features high ceilings, air conditioning throughout, and a spacious private terrace.

Holding deposit is 1 week's rent = £1,475 (at asking price)

Security deposit is 6 week's rent = £8,850 (at asking price £1,475pw)

Minimum Term 12 months

Council Tax Band G

For the latest information on broadband and mobile coverage, please visit checker.ofcom for the most up-to-date details.

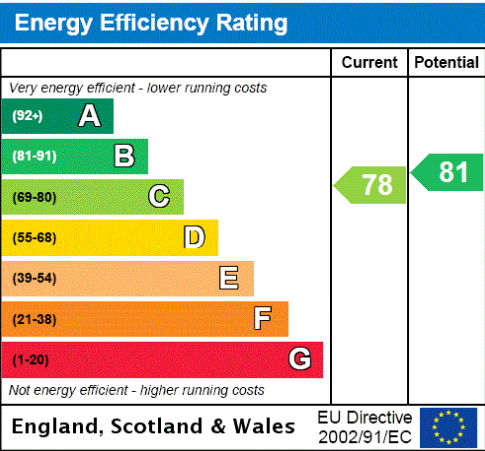
Nestled on the border of Fitzrovia and Soho, the apartment is close to numerous boutique shops and restaurants and has convenient access to transport links. Soho, known as London's entertainment district, offers upscale restaurants, theaters, nightlife, the film industry, and Chinatown, all within a vibrant and charming residential area.

A stunning two-bedroom penthouse with air conditioning throughout and located in prime position for Marylebone and Soho.



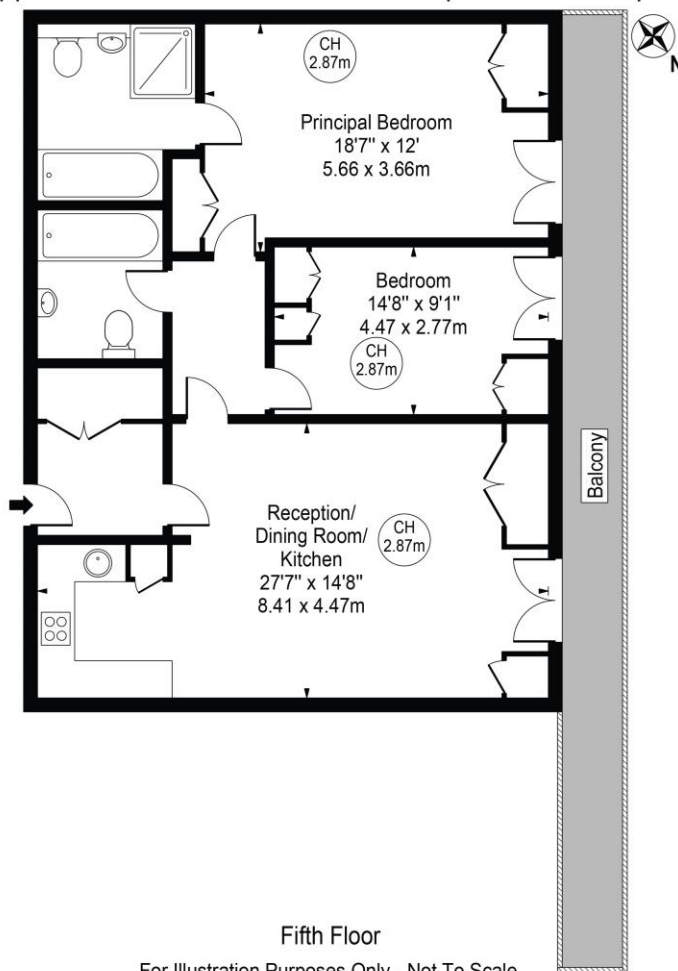
ADDITIONAL INFORMATION

Offers	Available for a minimum term of 12 months longer terms will be considered
Viewing	Strictly by appointment
Local Authority	Westminster City Council - Council Tax Band G



Orwell Studios

Approx. Gross Internal Area 997 Sq Ft - 92.62 Sq M



This floor plan should be used as a general outline for guidance only and does not constitute in whole or in part an offer or contract. Any intending purchaser or lessee should satisfy themselves by inspection, searches, enquiries and full survey as to the correctness of each statement. Any areas, measurements or distances quoted are approximate and should not be used to value a property or be the basis of any sale or let. Copyright Morriarti Photography & Design LTD

T: 020 7486 8866

37 New Cavendish Street, London, W1G 9TL

E: marylebone.lettings@carterjonas.co.uk

A member of



Exclusive UK affiliate of

CHRISTIE'S
INTERNATIONAL REAL ESTATE

Classification L2 - Business Data



IMPORTANT INFORMATION

These particulars are for general information purposes only and do not represent an offer or contract or part of one. Carter Jonas or anyone in their employment has made every attempt to ensure that the particulars and other information provided are as accurate as possible and they are not intended to amount to advice on which you should rely as being factually accurate. Full information which may be relevant to your decision regarding the property can be found on the property listing on carterjonas.co.uk or a separately available material information sheet, and we would advise you to confirm the details of any material information prior to any offer being submitted. You should not assume that the property has all necessary planning, building regulations or other consents and Carter Jonas has not tested any services, facilities, or equipment. Any measurements and distances given are approximate only. Where Carter Jonas has been provided with a floorplan by a third party, we cannot guarantee that the floorplan has been measured in accordance with IPMS. Purchasers or prospective tenants must satisfy themselves of all of the aforementioned by independent inspection or otherwise. Our images only represent part of the property as it appeared at the time they were taken and do not represent the furnishings included, these are confirmed in a separate inventory. If you require further information, please contact us. *Administration fees may apply depending on tenancy type. Please contact your local branch for this information.