



**BRYANSTON SQUARE, MARYLEBONE, W1H**  
£5,995 per month\*

**Carter Jonas**



---

# BRYANSTON SQUARE, MARYLEBONE, LONDON, W1H 2DH

Stunning recently refurbished apartment with gorgeous high ceilings on the sought-after Bryanston Square.

- Excellent conditions
- Two bedrooms
- High Ceilings
- Wood Floors
- Bryanston Square access
- Furnished to a high standard
- Communal scheme heating and hot water

## LOCATION

Bryanston Square is a short walk from Marylebone High Street, as well as Marble Arch and Baker Street Stations, and is an ideal location for all the West End's world-class amenities. Hyde Park's beautiful open spaces are also a short walk away (approximately 0.4 miles).

## THE PROPERTY

Boasting wood floors throughout, a high spec kitchen and bathrooms and lovely original features, with access to the quiet communal gardens of the square.

It comprises a large, open plan kitchen/ reception room facing the square, a large master bedroom with en-suite shower room, study/ single bedroom and 2nd shower room.

Available for immediate long term rental on a furnished basis.

Communal scheme heating and hot water.

Minimum term 12 months

Council Tax Band F

## OUTSIDE

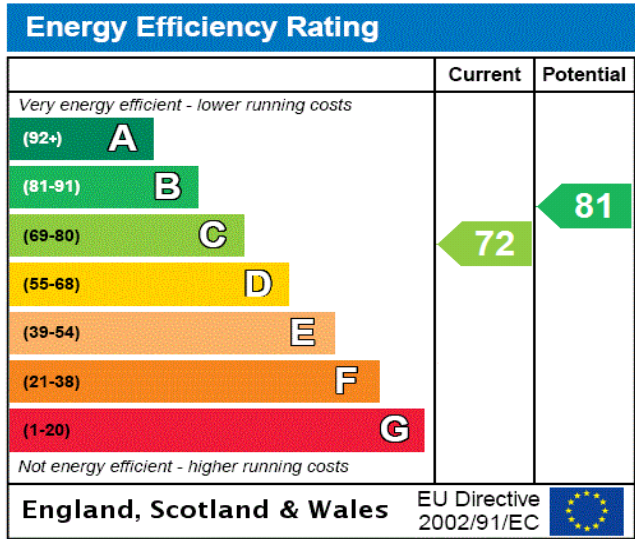
Bryanston Square access





ADDITIONAL INFORMATION

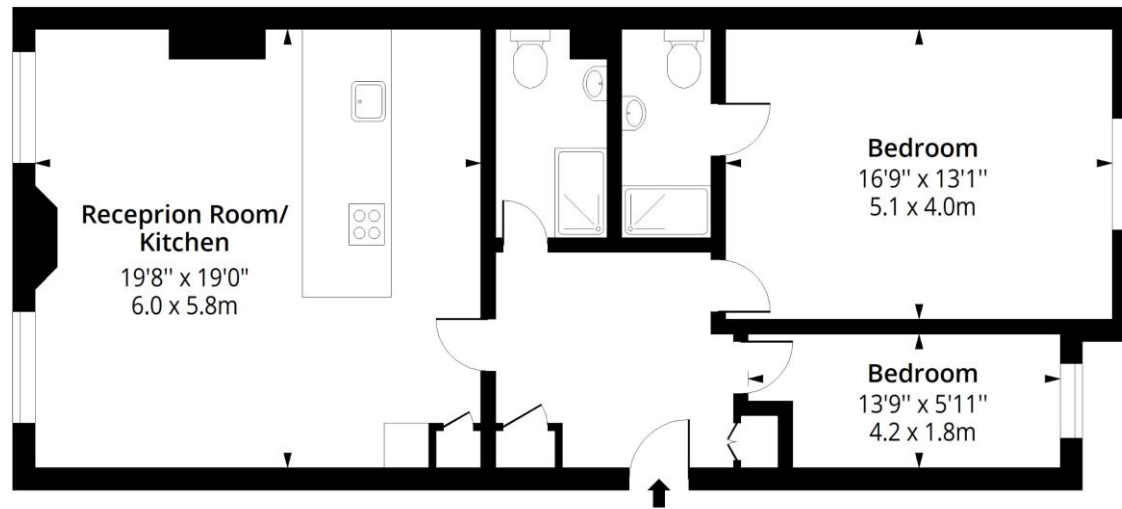
Offers	Available for a minimum term of 12 months longer terms will be considered
Viewing	Strictly by appointment
Local Authority	Westminster City Council - Council Tax Band F





# Bryanston Square, W1H

Approx. Gross Internal Area 906 Sq Ft - 84.17 Sq M



## Ground Floor

Floor Area 906 Sq Ft - 84.17 Sq M



Measured according to RICS IPMS2. Floor plan is for illustrative purposes only and is not to scale. Every attempt has been made to ensure the accuracy of the floor plan shown, however all measurements, fixtures, fittings and data shown are an approximate interpretation for illustrative purposes only. 1 sq m = 10.76 sq feet.

lpaplus.com

Date: 24/8/2023



T: 020 7486 8866

37 New Cavendish Street, London, W1G 9TL

E: marylebone.lettings@carterjonas.co.uk

A member of



Exclusive UK affiliate of

**CHRISTIE'S**  
INTERNATIONAL REAL ESTATE

Classification L2 - Business Data

### IMPORTANT INFORMATION

These particulars are for general information purposes only and do not represent an offer or contract or part of one. Carter Jonas or anyone in their employment has made every attempt to ensure that the particulars and other information provided are as accurate as possible and they are not intended to amount to advice on which you should rely as being factually accurate. Full information which may be relevant to your decision regarding the property can be found on the property listing on [carterjonas.co.uk](http://carterjonas.co.uk) or a separately available material information sheet, and we would advise you to confirm the details of any material information prior to any offer being submitted. You should not assume that the property has all necessary planning, building regulations or other consents and Carter Jonas has not tested any services, facilities, or equipment. Any measurements and distances given are approximate only. Where Carter Jonas has been provided with a floorplan by a third party, we cannot guarantee that the floorplan has been measured in accordance with IPMS. Purchasers or prospective tenants must satisfy themselves of all of the aforementioned by independent inspection or otherwise. Our images only represent part of the property as it appeared at the time they were taken and do not represent the furnishings included; these are confirmed in a separate inventory. If you require further information, please contact us. \*Administration fees may apply depending on tenancy type. Please contact your local branch for this information.