



STOURCLIFFE STREET, LONDON, W1H

£876.92 per week*

Carter Jonas

FLAT 14, STOURCLIFFE CLOSE, STOURCLIFFE STREET, LONDON, W1H 5AQ

- Third floor with lift
- Porter
- Three double bedrooms
- Large reception room
- Fitted kitchen
- Wooden flooring
- Underfloor heating in bathroom
- Furnished or Unfurnished

THE PROPERTY

NO HMO LICENSE

This naturally bright flat comprises three bedrooms, spacious bathroom, WC, large double reception room and modern fully fitted kitchen.

This building benefits from a porter and is excellently located close to Hyde Park with Connaught village and Marylebone a short walk away.

Stourcliffe Street is a charming residential street known for its classic London architecture and vibrant community atmosphere. Situated close to various amenities, the street offers easy access to local cafes and shops. The nearest train stations are Marble Arch station, just a approximately 10-minute walk away, providing quick links to the city and beyond, followed by Edgware Road Station, approximately 15 minutes on foot, offering further connections to London's extensive transport network.

Offered furnished for a long-term tenancy.

Holding deposit is 1 week's rent = £876.92 (at asking price)

Security deposit is 5 weeks rent = £4,384.60 (at asking price £876.92pw)

Minimum term 12 months

A bright contemporary styled apartment situated in a well-maintained period building moment from Marble Arch and Hyde Park.

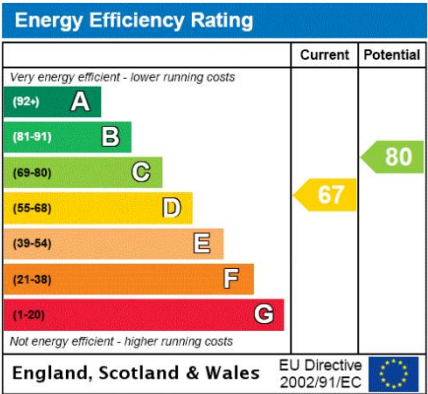


Council Tax Band F

For the latest information on broadband and mobile coverage, please visit [/checker.ofcom](https://www.checker.ofcom.gov.uk/) for the most up-to-date details.

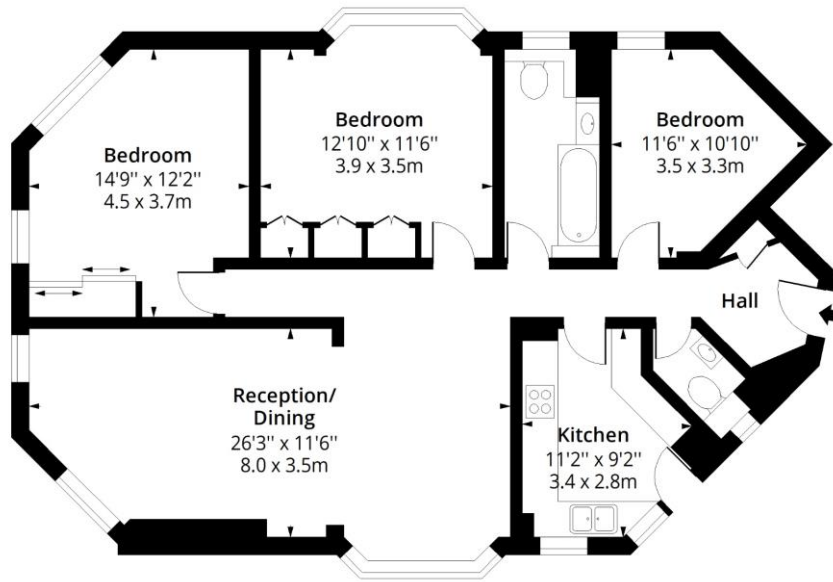
ADDITIONAL INFORMATION

Offers	Available for a minimum term of 12 months longer terms will be considered
Viewing	Strictly by appointment
Local Authority	Westminster City Council - Council Tax Band F



Stourcliffe Close, W1H

Approx. Gross Internal Area 1052 Sq Ft - 97.73 Sq M



Third Floor

Floor Area 1052 Sq Ft - 97.73 Sq M



Measured according to RICS IPMS2. Floor plan is for illustrative purposes only and is not to scale. Every attempt has been made to ensure the accuracy of the floor plan shown, however all measurements, fixtures, fittings and data shown are an approximate interpretation for illustrative purposes only. 1 sq m = 10.76 sq feet.

lpaplus.com

Date: 3/5/2025



T: 020 7486 8866

37 New Cavendish Street, London, W1G 9TL

E: marylebone.lettings@carterjonas.co.uk

A member of



Exclusive UK affiliate of

CHRISTIE'S
INTERNATIONAL REAL ESTATE

IMPORTANT INFORMATION

These particulars are for general information purposes only and do not represent an offer or contract or part of one. Carter Jonas or anyone in their employment has made every attempt to ensure that the particulars and other information provided are as accurate as possible and they are not intended to amount to advice on which you should rely as being factually accurate. Full information which may be relevant to your decision regarding the property can be found on the property listing on carterjonas.co.uk or a separately available material information sheet, and we would advise you to confirm the details of any material information prior to any offer being submitted. You should not assume that the property has all necessary planning, building regulations or other consents and Carter Jonas has not tested any services, facilities, or equipment. Any measurements and distances given are approximate only. Where Carter Jonas has been provided with a floorplan by a third party, we cannot guarantee that the floorplan has been measured in accordance with IPMS. Purchasers or prospective tenants must satisfy themselves of all of the aforementioned by independent inspection or otherwise. Our images only represent part of the property as it appeared at the time they were taken and do not represent the furnishings included; these are confirmed in a separate inventory. If you require further information, please contact us. *Administration fees may apply depending on tenancy type. Please contact your local branch for this information.