



**WHEATLEY STREET, MARYLEBONE, W1G**  
£5,200 per month\*

**Carter Jonas**



---

## **GROUND & LOWER GROUND FLOOR, WHEATLEY STREET, MARYLEBONE, LONDON, W1G 8PS**

- Two-bedroom maisonette
- Large reception room with double aspect windows
- Two spacious bathrooms
- Plenty of storage throughout
- Unfurnished or furnished at additional costs
- Located close to Marylebone High Street

### **THE PROPERTY**

This maisonette is set over two floors and comprises of an open plan kitchen and reception room, two double bedrooms with fitted storage and two bathrooms.

The property benefits from lots of natural light, wooden flooring and access of a communal courtyard.

Nestled in the heart of Marylebone, Wheatley Street offers an exceptional blend of classic London charm and modern convenience. This vibrant location boasts easy access to boutique shops, renowned restaurants, and excellent transport links, including nearby Bond Street and Oxford Circus stations. Ideal for professionals seeking a stylish, well-connected home in one of London's most desirable neighbourhoods.

Holding deposit is 1 week's rent = £1,200 (at asking price)

Security deposit is 6 weeks rent = £7,200 (at asking price)

Minimum term 12 months

Council Tax Band G

For the latest information on broadband and mobile coverage, please visit <https://checker.ofcom.org.uk/en-gb/broadband-coverage> for the most up-to-date details.

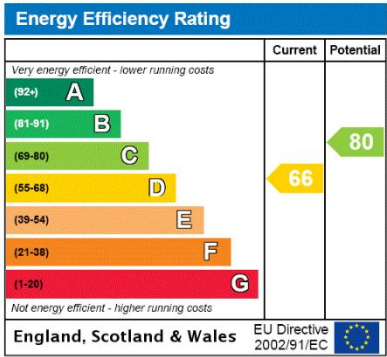
**Beautiful maisonette situated on a quiet street just moments from Marylebone High Street and within easy reach of transport links.**



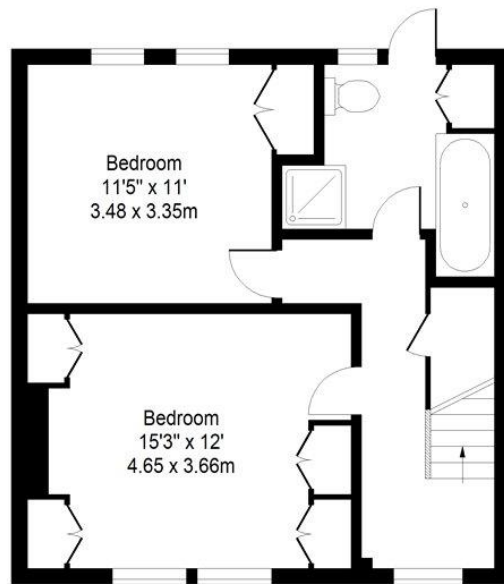


ADDITIONAL INFORMATION

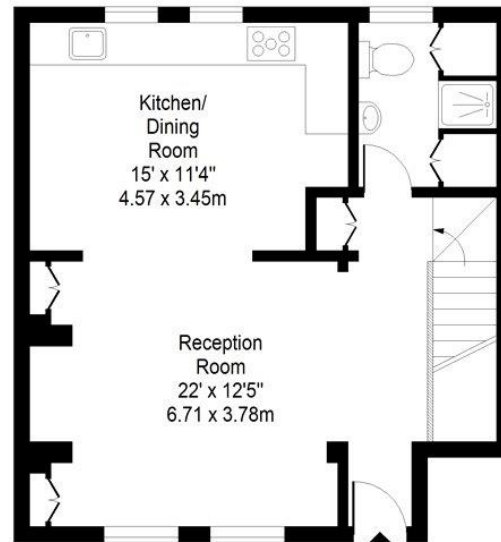
|                 |   |
|-----------------|---|
| Offers          | Available for a minimum term of 12 months longer terms will be considered |
| Viewing         | Strictly by appointment   |
| Local Authority | Westminster City Council - Council Tax Band G                             |



WHEATLEY STREET



Lower Ground Floor



Raised Ground Floor

Approx. Gross Internal Area 1050 Sq Ft - 95.69 Sq M  
For Illustrative Purposes Only - Not To Scale  
[www.lpaplus.com](http://www.lpaplus.com)



T: 020 7486 8866

37 New Cavendish Street, London, W1G 9TL

E: [marylebone.lettings@carterjonas.co.uk](mailto:marylebone.lettings@carterjonas.co.uk)

A member of



Exclusive UK affiliate of

**CHRISTIE'S**  
INTERNATIONAL REAL ESTATE

Classification L2 - Business Data

#### IMPORTANT INFORMATION

These particulars are for general information purposes only and do not represent an offer or contract or part of one. Carter Jonas or anyone in their employment has made every attempt to ensure that the particulars and other information provided are as accurate as possible and they are not intended to amount to advice on which you should rely as being factually accurate. Full information which may be relevant to your decision regarding the property can be found on the property listing on [carterjonas.co.uk](http://carterjonas.co.uk) or a separately available material information sheet, and we would advise you to confirm the details of any material information prior to any offer being submitted. You should not assume that the property has all necessary planning, building regulations or other consents and Carter Jonas has not tested any services, facilities, or equipment. Any measurements and distances given are approximate only. Where Carter Jonas has been provided with a floorplan by a third party, we cannot guarantee that the floorplan has been measured in accordance with IPMS. Purchasers or prospective tenants must satisfy themselves of all of the aforementioned by independent inspection or otherwise. Our images only represent part of the property as it appeared at the time they were taken and do not represent the furnishings included; these are confirmed in a separate inventory. If you require further information, please contact us. \*Administration fees may apply depending on tenancy type. Please contact your local branch for this information.