



GREAT CUMBERLAND PLACE, MARYLEBONE, W1H
£750 per week*

Carter Jonas

59 CUMBERLAND COURT, GREAT CUMBERLAND PLACE, MARYLEBONE, LONDON, W1H 7DQ

- 2 Bedrooms
- 1 Bathroom
- Reception/ Kitchen
- Flat/ Apartment
- Long let

THE PROPERTY

The property offers a two-bedroom, one-bathroom apartment situated on Great Cumberland place for rent. It benefits from a spacious reception room with wooden floors and a fitted kitchen.

Great Cumberland Place is in London City Centre, a walkable location with fantastic shopping with Oxford Street in proximity. Cultural landmarks including the British Museum and Natural History Museum are close by and accessible by rail. The distance between Bond Street Underground Station and Marble Arch Tube Station approximately 9-minute walk.

Holding deposit is 1 week's rent = £750 (at asking price)

Security deposit is 5 week's rent = £3,750 (at asking price £750pw)

Minimum Term 12 months

Council Tax Band E

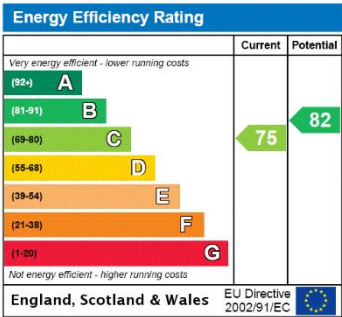
For the latest information on broadband and mobile coverage, please visit [/checker.ofcom](http://checker.ofcom) for the most up-to-date details.

This fully furnished rental property comprises a two-bedroom, one-bathroom with an open plan kitchen/ reception. The apartment is in the prestigious Great Cumberland Place.



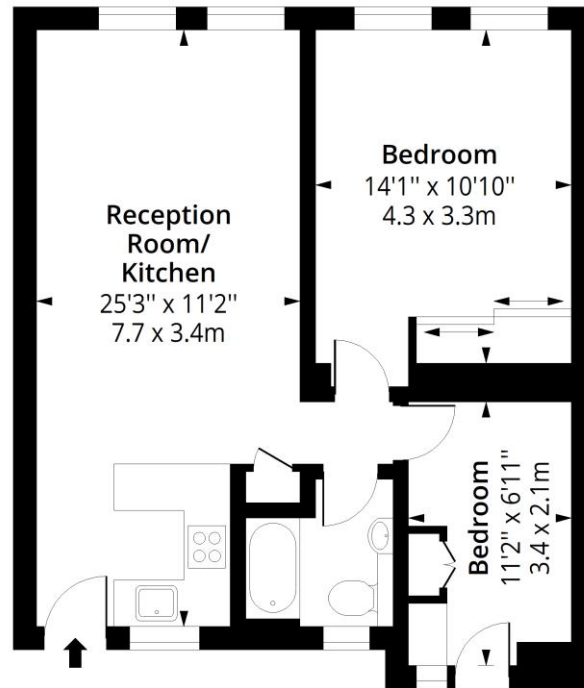
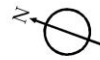
ADDITIONAL INFORMATION

Offers	Available for a minimum term of 12 months longer terms will be considered
Viewing	Strictly by appointment
Local Authority	Westminster County Council - Council Tax Band E



Cumberland Court, W1H

Approx. Gross Internal Area 583 Sq Ft - 54.16 Sq M



Seventh Floor

Floor Area 583 Sq Ft - 54.16 Sq M



Measured according to RICS IPMS2. Floor plan is for illustrative purposes only and is not to scale. Every attempt has been made to ensure the accuracy of the floor plan shown, however all measurements, fixtures, fittings and data shown are an approximate interpretation for illustrative purposes only. 1 sq m = 10.76 sq feet.
lpaplus.com

Date: 11/10/2023

T: 020 7486 8866

37 New Cavendish Street, London, W1G 9TL

E: marylebone.lettings@carterjonas.co.uk

A member of



Exclusive UK affiliate of

CHRISTIE'S
INTERNATIONAL REAL ESTATE

Classification L2 - Business Data



IMPORTANT INFORMATION

These particulars are for general information purposes only and do not represent an offer or contract or part of one. Carter Jonas or anyone in their employment has made every attempt to ensure that the particulars and other information provided are as accurate as possible and they are not intended to amount to advice on which you should rely as being factually accurate. Full information which may be relevant to your decision regarding the property can be found on the property listing on carterjonas.co.uk or a separately available material information sheet, and we would advise you to confirm the details of any material information prior to any offer being submitted. You should not assume that the property has all necessary planning, building regulations or other consents and Carter Jonas has not tested any services, facilities, or equipment. Any measurements and distances given are approximate only. Where Carter Jonas has been provided with a floorplan by a third party, we cannot guarantee that the floorplan has been measured in accordance with IPMS. Purchasers or prospective tenants must satisfy themselves of all of the aforementioned by independent inspection or otherwise. Our images only represent part of the property as it appeared at the time they were taken and do not represent the furnishings included; these are confirmed in a separate inventory. If you require further information, please contact us. *Administration fees may apply depending on tenancy type. Please contact your local branch for this information.