



**BANBURY ROAD, OXFORD, OX2**  
£925 per month\*

**Carter Jonas**



# BANBURY ROAD, OXFORD, OX2

A ground floor studio apartment situated in Summertown.  
Suitable for a single occupant only.

Studio apartment in the heart of Summertown only a short walk from the main shops and bus stop to the city centre. Suitable for a single occupier only.

Comprising: Entrance hall, open plan reception/kitchen area, bedroom and shower room.

Additional payment of £125 per month for Electricity & Water.

EPC - D. Council Tax Band A - Please see Oxford City Council for current costs.

Internet & Mobile Further information on availability and speeds can be found at [checker.ofcom.org.uk](http://checker.ofcom.org.uk). Mains gas, electric and water are connected to this property.

Available from early June for a minimum 12 month tenancy unfurnished.

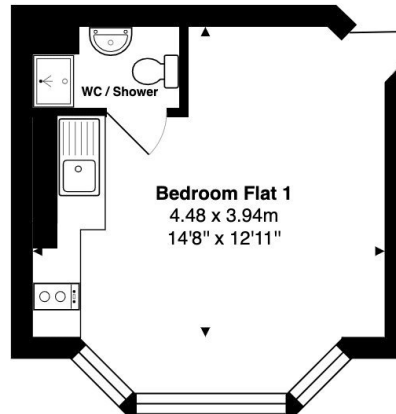
- Council Tax = A
- Deposit Required = £1,067.00
- Long Let
- EPC = D

Energy Efficiency Rating		
	Current	Potential
Very energy efficient - lower running costs		
(92+) A		
(81-91) B		
(69-80) C		
(55-68) D	60	71
(39-54) E		
(21-38) F		
(1-20) G		
Not energy efficient - higher running costs		
England, Scotland & Wales	EU Directive 2002/91/EC	

**Oxford Lettings 01865 511444**

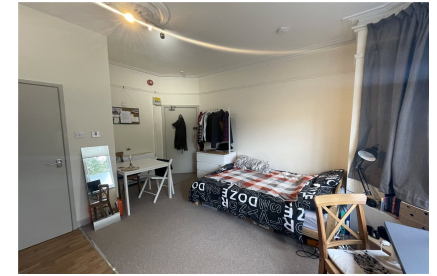
[oxfordresilettings@carterjonas.co.uk](mailto:oxfordresilettings@carterjonas.co.uk)

Mayfield House, 256 Banbury Road, Oxford, Oxfordshire, OX2 7DE



Approx Gross Internal Area 19.2 m<sup>2</sup> ... 207 ft<sup>2</sup>

Whilst every attempt has been made to ensure the accuracy of the floor plan contained here, measurements of doors, windows, rooms, and any other items are approximate. No responsibility is taken for any error, omission, or mis-statement. This plan is for illustrative purposes only and should be used as such. Drawn by E8 Property Services. [www.e8ps.co.uk](http://www.e8ps.co.uk)



## IMPORTANT INFORMATION

These particulars are for general information purposes only and do not represent an offer or contract or part of one. Carter Jonas or anyone in their employment has made every attempt to ensure that the particulars and other information provided are as accurate as possible and they are not intended to amount to advice on which you should rely as being factually accurate. Full information which may be relevant to your decision regarding the property can be found on the property listing on [carterjonas.co.uk](http://carterjonas.co.uk) or a separately available material information sheet, and we would advise you to confirm the details of any material information prior to any offer being submitted. You should not assume that the property has all necessary planning, building regulations or other consents and Carter Jonas has not tested any services, facilities, or equipment. Any measurements and distances given are approximate only. Where Carter Jonas has been provided with a floorplan by a third party, we cannot guarantee that the floorplan has been measured in accordance with IPMS. Purchasers or prospective tenants must satisfy themselves of all of the aforementioned by independent inspection or otherwise. Our images only represent part of the property as it appeared at the time they were taken and do not represent the furnishings included; these are confirmed in a separate inventory. If you require further information, please contact us. \*Administration fees may apply depending on tenancy type. Please contact your local branch for this information.