



JERICO STREET, JERICO, OX2
£2,250 per month*

Carter Jonas

JERICO STREET, JERICO, OXFORD, OX2 6BU

- 3 Bedrooms
- 2 Bathrooms
- 1 Reception
- Courtyard
- Unfurnished
- No parking
- No HMO

THE PROPERTY

Comprising : Entrance hall, open plan living/dining/kitchen, cloakroom, master bedroom with ensuite shower room, 1 further double bedroom, family bathroom and 1 single bedroom. The property benefits from a Courtyard garden and an outside storage cupboard. Unfortunately there is no parking available and no provision to apply for a permit and no HMO Licence.

Available for a 12 month tenancy unfurnished from Mid August 2025.

Council tax band D. EPC rating: C

Flood Zone 1: Low probability of flooding.

Mains gas, electricity and water are connected to the property.

Internet & Mobile Further information on availability and speeds can be found at checker.ofcom.org.uk.

Holding deposit = 1 weeks rent of £519 (£2250 pcm)

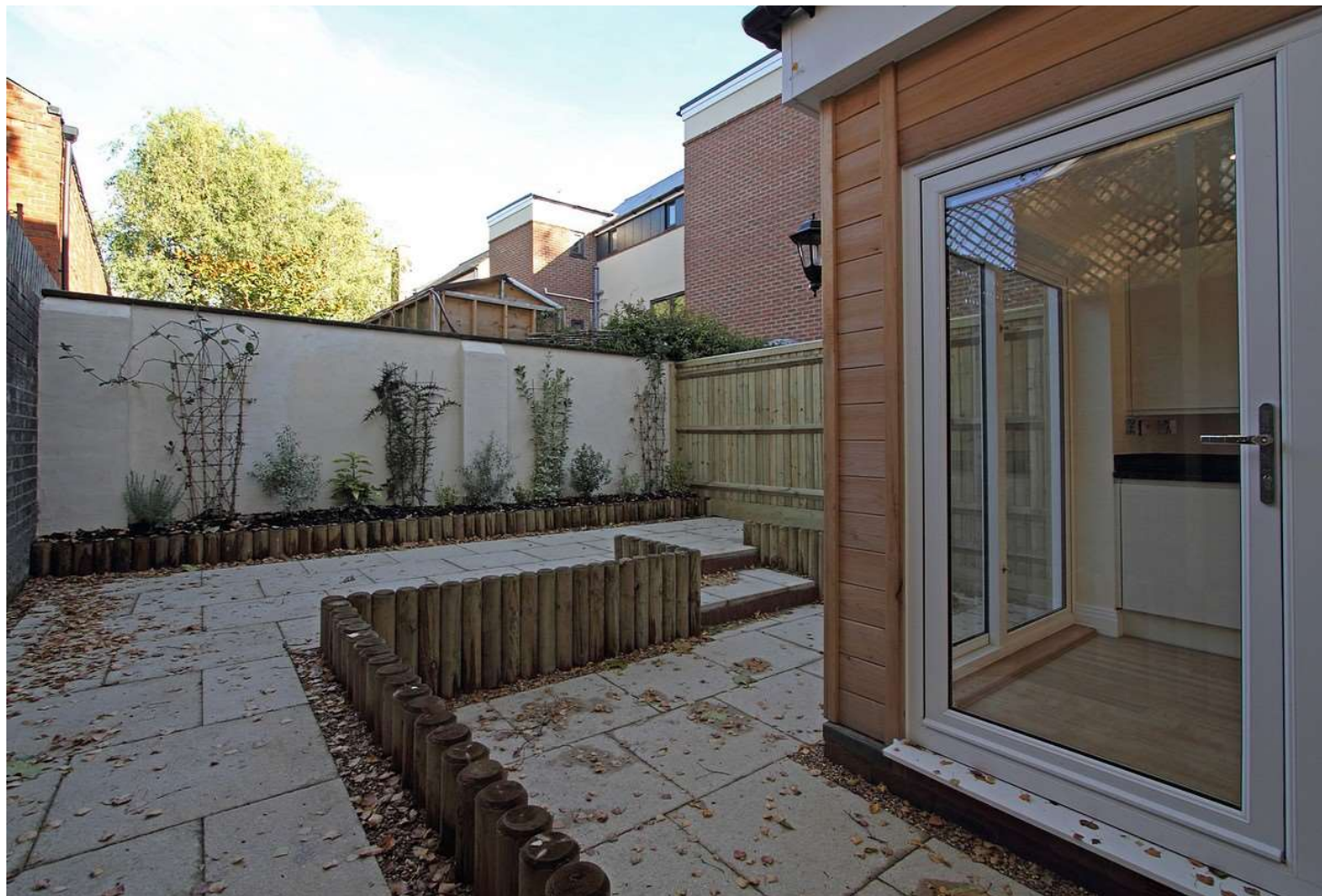
Deposit is 5 weeks rent (£2250 pcm = £2596 deposit)

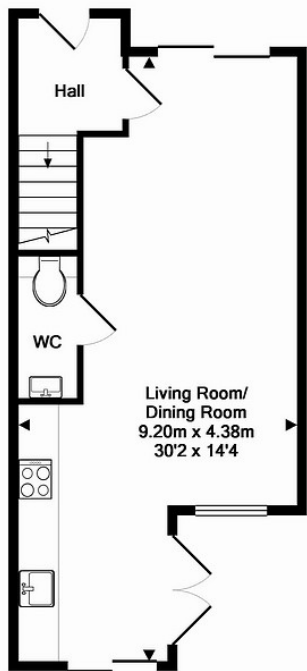
A modern and stylish town house situated in the heart of Jericho. This property is not HMO licenced and does not offer parking or the possibility of a permit.



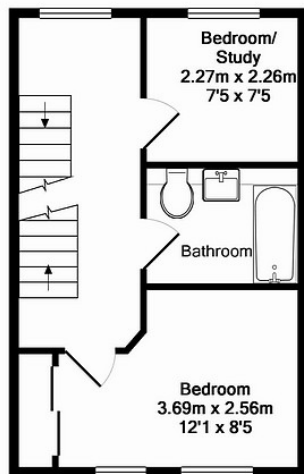
ADDITIONAL INFORMATION

Offers	Available for a minimum term of 12 months longer terms will be considered
Viewing	Strictly by appointment
Local Authority	Oxford City Council - Council Tax Band D

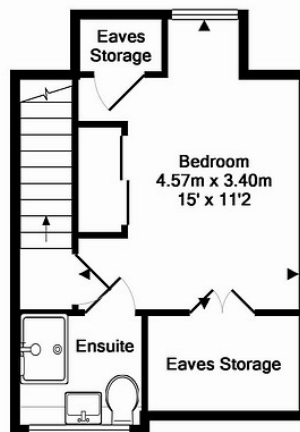




GROUND FLOOR
APPROX. FLOOR
AREA 36.1 SQ.M.
(389 SQ.FT.)



1ST FLOOR
APPROX. FLOOR
AREA 29.6 SQ.M.
(319 SQ.FT.)



2ND FLOOR
APPROX. FLOOR
AREA 24.7 SQ.M.
(266 SQ.FT.)

TOTAL APPROX. FLOOR AREA 90.5 SQ.M. (974 SQ.FT.)

Whilst every attempt has been made to ensure the accuracy of this floor plan, measurements are approximate and no responsibility is taken for any error, omission or mis-statement. This floor plan is for illustrative purposes only.
Made with Metropix ©2012



T: 01865 511444

Mayfield House, 256 Banbury Road, Oxford, Oxfordshire, OX2 7DE
E: oxfordresilettings@carterjonas.co.uk

A member of



Exclusive UK affiliate of

CHRISTIE'S
INTERNATIONAL REAL ESTATE

IMPORTANT INFORMATION

These particulars are for general information purposes only and do not represent an offer or contract or part of one. Carter Jonas or anyone in their employment has made every attempt to ensure that the particulars and other information provided are as accurate as possible and they are not intended to amount to advice on which you should rely as being factually accurate. Full information which may be relevant to your decision regarding the property can be found on the property listing on carterjonas.co.uk or a separately available material information sheet, and we would advise you to confirm the details of any material information prior to any offer being submitted. You should not assume that the property has all necessary planning, building regulations or other consents and Carter Jonas has not tested any services, facilities, or equipment. Any measurements and distances given are approximate only. Where Carter Jonas has been provided with a floorplan by a third party, we cannot guarantee that the floorplan has been measured in accordance with IPMS. Purchasers or prospective tenants must satisfy themselves of all of the aforementioned by independent inspection or otherwise. Our images only represent part of the property as it appeared at the time they were taken and do not represent the furnishings included; these are confirmed in a separate inventory. If you require further information, please contact us. *Administration fees may apply depending on tenancy type. Please contact your local branch for this information.