



POTTERY LANE, WOODLESFORD, LS26
£1,100 per month*

Carter Jonas

FISHPOND LOCK HOUSE, CANAL SIDE, POTTERY LANE, WOODLESFORD, LEEDS, WEST YORKSHIRE, LS26 8PJ

A 3 bedroom detached house situated next to a Canal
in Woodlesford

- Three Bedrooms
- Bathroom
- Kitchen
- Downstairs Cloakroom
- Lounge
- Allocated parking
- Garden
- Unfurnished

THE PROPERTY

Accommodation comprising: entrance hall, lounge, kitchen and downstairs cloakroom. To the first floor are three bedrooms and separate family bathroom. Externally there is allocated parking and a large enclosed rear garden.

Available late August for a 12 month tenancy unfurnished.

Pets considered. No access to Loft. Mains water and electricity are connected to the property. Oil central heating

Internet & Mobile: Further information on availability and speeds can be found at checker.ofcom.org.uk

EPC Rating E. Council Tax Band B (please see Leeds Council Website for current cost)

Flood Risk; Low

At a rent of £1,100 per calendar month

Holding deposit of 1 week's rent £253

Security deposit of 5 weeks rent £1269

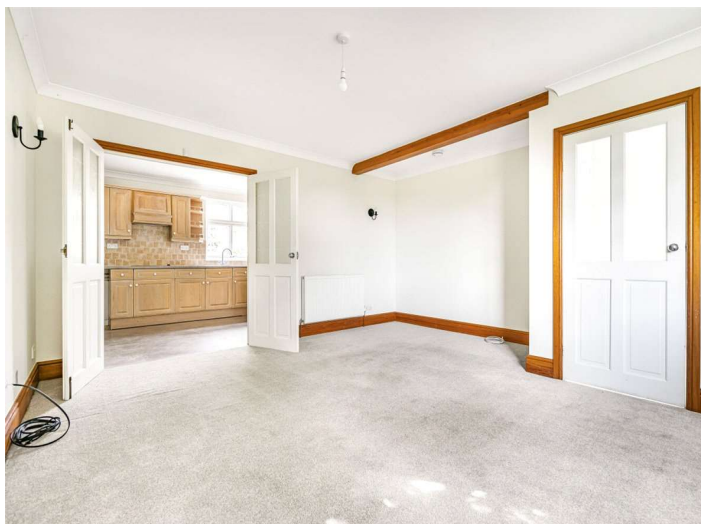


ADDITIONAL INFORMATION

Offers	Available for an initial 12 month term
--------	--

Viewing	Strictly by appointment
---------	-------------------------

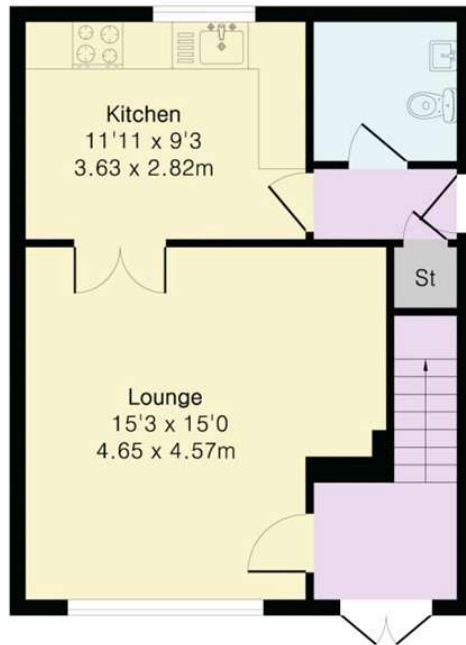
Local Authority	Council Tax Band B
-----------------	--------------------



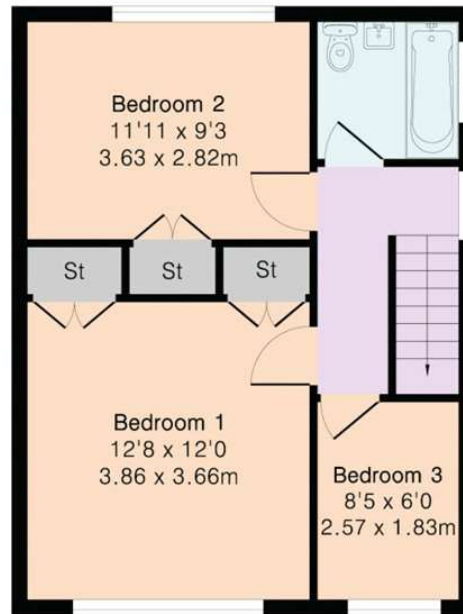
Approximate Gross Internal Area 902 sq ft - 74 sq m

Ground Floor Area 451 sq ft – 42 sq m

First Floor Area 451 sq ft – 42 sq m



Ground Floor



First Floor

Floor plan produced in accordance with RICS Property Measurement 2nd Edition. Although Pink Plan Ltd ensures the highest level of accuracy, measurements of doors, windows and rooms are approximate and no responsibility is taken for error, omission or misstatement. These plans are for representation purposes only and no guarantee is given on the total square footage of the property within this plan. The figure icon is for initial guidance only and should not be relied on as a basis of valuation.

Carter Jonas

T: 01865 511444

Mayfield House, 256 Banbury Road, Oxford, Oxfordshire, OX2 7DE

E: oxfordresilettings@carterjonas.co.uk

A member of



Exclusive UK affiliate of
CHRISTIE'S
INTERNATIONAL REAL ESTATE

Classification L2 - Business Data



IMPORTANT INFORMATION

These particulars are for general information purposes only and do not represent an offer or contract or part of one. Carter Jonas or anyone in their employment has made every attempt to ensure that the particulars and other information provided are as accurate as possible and they are not intended to amount to advice on which you should rely as being factually accurate. Full information which may be relevant to your decision regarding the property can be found on the property listing on carterjonas.co.uk or a separately available material information sheet, and we would advise you to confirm the details of any material information prior to any offer being submitted. You should not assume that the property has all necessary planning, building regulations or other consents and Carter Jonas has not tested any services, facilities, or equipment. Any measurements and distances given are approximate only. Where Carter Jonas has been provided with a floorplan by a third party, we cannot guarantee that the floorplan has been measured in accordance with IPMS. Purchasers or prospective tenants must satisfy themselves of all of the aforementioned by independent inspection or otherwise. Our images only represent part of the property as it appeared at the time they were taken and do not represent the furnishings included; these are confirmed in a separate inventory. If you require further information, please contact us. *Administration fees may apply depending on tenancy type. Please contact your local branch for this information.