



ASHINGTON ROAD, LONDON, SW6
£3,000,000

Carter Jonas

ASHINGTON ROAD, LONDON, SW6

An immaculate recently refurbished five bedroom family home in prime location of Parsons Green. EPC rating C. Set out in one of the most desirable locations of Fulham, this impressive five bedroom house has no expense spared during its renovation. The basement benefits from plenty of natural light and excellent entertaining space.

The kitchen comes with Miele appliances, Neff built-in larder fridge and Fusion Quooker tap. Bi-fold doors lead out to a paved garden, ideal for al fresco entertaining.

The luxurious principle bedroom features a walk in wardrobe an ensuite bathroom that has a bath and a walk-in shower.

There is a zoned underfloor heating throughout the ground level and all bathrooms. The front windows of the property benefit from extra insulation to reduce noise and keep in the heat but also extra security.

The property also has a Verisure alarm system.

Ashington Road is situated moments from the amenities of New Kings Road and the beautiful spaces of Hurlingham Park. Parsons Green underground station (District Line) is situated moments away along with excellent bus routes on New Kings Road.

AMENITIES

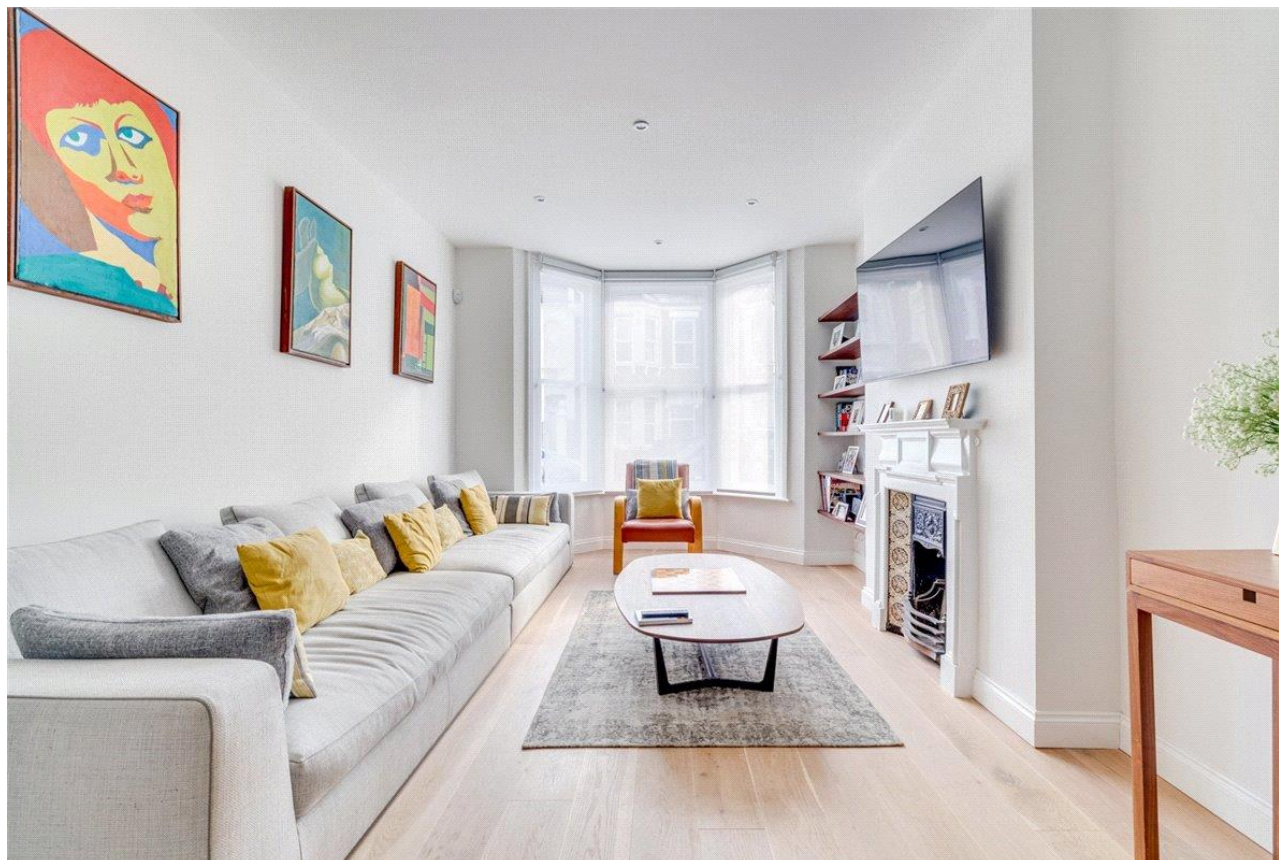
- 5 Bedrooms
- 2 Reception rooms
- 4 Bathrooms
- Garden
- Excellent security
- Council Tax Band G

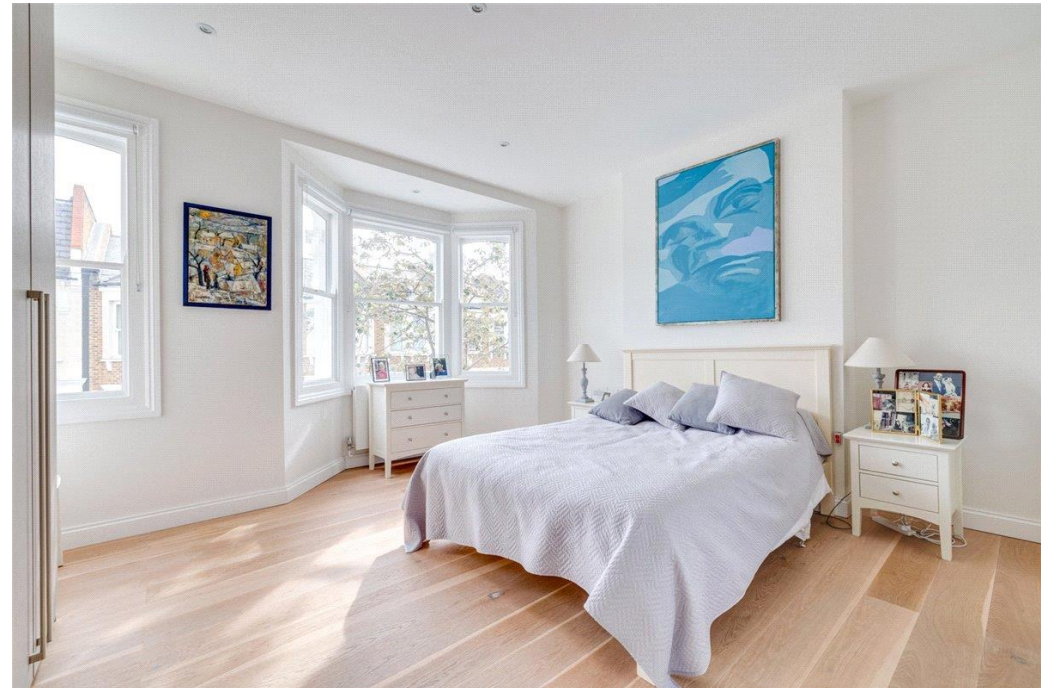
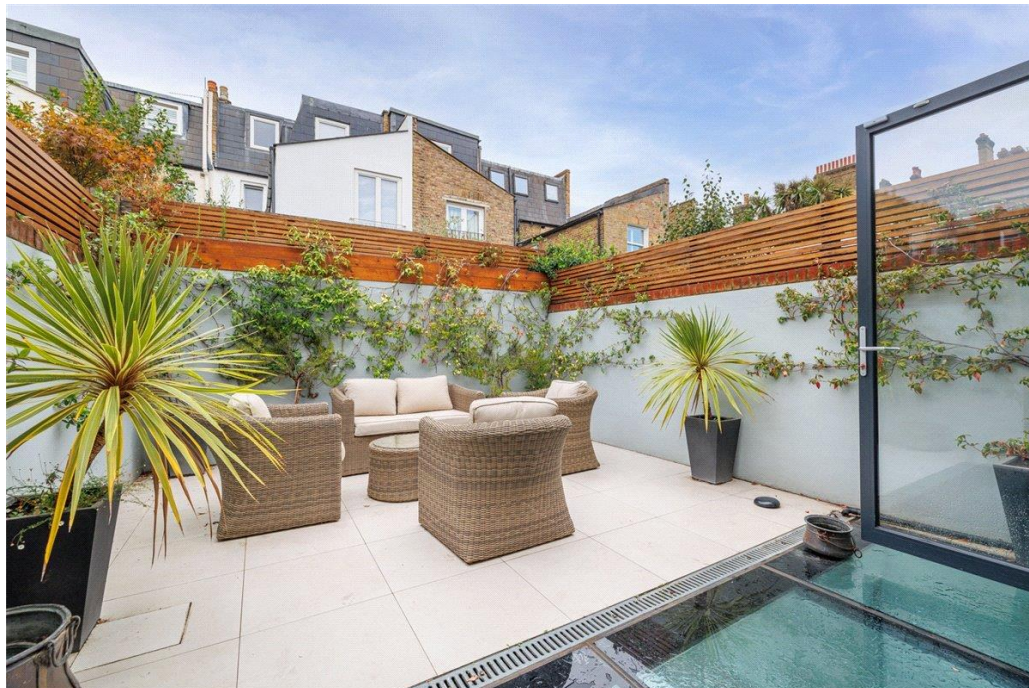
TENURE To be advised

LOCAL AUTHORITY

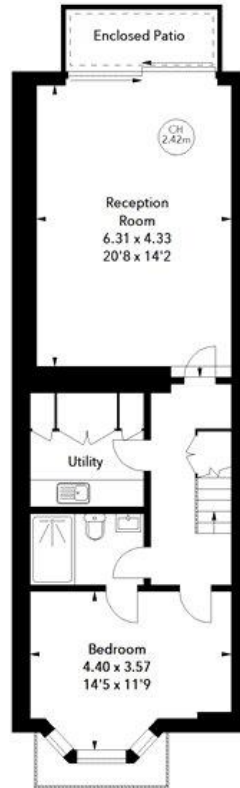
EPC BAND C

AN IMMACULATE RECENTLY REFURBISHED FIVE BEDROOM FAMILY HOME IN PRIME LOCATION OF PARSONS GREEN. EPC RATING C.





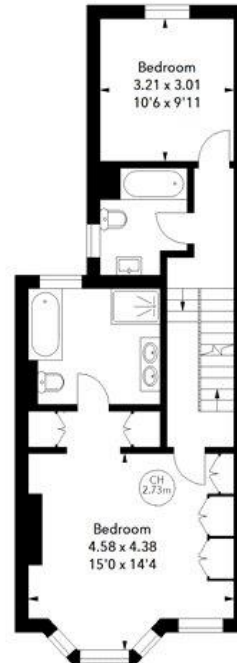
Ashington Road, SW6
 Approximate Area = 240.98 sq m / 2594 sq ft
 (Including Eaves Storage)
 Approximate Eaves Storage Area = 3.62 sq m / 39 sq ft



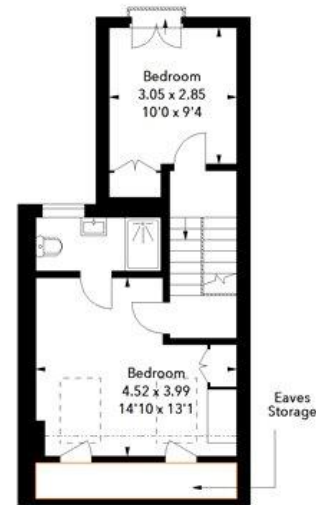
Lower Ground Floor



Ground Floor



First Floor



Second Floor

The floor plan is not to scale and measurements and areas shown are approximate and therefore should be used for illustrative purposes only. The plan has been prepared in accordance with the RICS code of Measuring Practice and whilst we have confidence in the information produced, it must not be relied on. If there is any aspect of particular importance, you should carry out or commission your own inspection of the property.

Energy Efficiency Rating		
	Current	Potential
Very energy efficient - lower running costs		
(92+) A		
(81-91) B		
(69-80) C	76	83
(55-68) D		
(39-54) E		
(21-38) F		
(1-20) G		
Not energy efficient - higher running costs		
England, Scotland & Wales EU Directive 2002/91/EC		

Fulham 020 7731 3333

bishopspark@carterjonas.co.uk
 361 Fulham Palace Road, London, SW6 6TA

carterjonas.co.uk
 Offices throughout the UK

Exclusive UK affiliate of
CHRISTIE'S
 INTERNATIONAL REAL ESTATE

IMPORTANT INFORMATION

These particulars are for general information purposes only and do not represent an offer or contract or part of one. Carter Jonas or anyone in their employment has made every attempt to ensure that the particulars and other information provided are as accurate as possible and they are not intended to amount to advice on which you should rely as being factually accurate. Full information which may be relevant to your decision regarding the property can be found on the property listing on carterjonas.co.uk or, (including off market properties) on the brochure or a separately available material information sheet. We would advise you to confirm the details of any material information prior to any offer being submitted. You should not assume that the property has all necessary planning, building regulations or other consents and Carter Jonas has not tested any services, facilities or equipment. Any measurements and distances given are approximate only. Where Carter Jonas has been provided with a floorplan by a third party, we cannot guarantee that the floorplan has been measured in accordance with IPMS. Purchasers must satisfy themselves of all of the aforementioned by independent inspection or otherwise. Our images only represent part of the property as it appeared at the time they were taken and do not represent the furnishings included; these are confirmed in a separate inventory. If you require further information, please contact us.