



**STEVENAGE ROAD, LONDON, SW6**  
£3,800 per month

**Carter Jonas**



# 144 BISHOPS MANSIONS, STEVENAGE ROAD, LONDON, SW6

- Three bedrooms
- Lateral space
- Balcony
- Porter
- Communal gardens
- Stevenage Road end of the Mansions
- EPC C

## LOCATION

## THE PROPERTY

A well presented three bedroom property located on the first floor of this popular mansion block overlooking the park. The property comprises a large bright double reception room, one double bedroom, two single bedrooms and two bathrooms (one en-suite).

Bishops Mansions is considered to be the premier mansion block in Fulham, boasting an enviable location within striking distance of the super Bishops Park and the River Thames. Running towards the river off Fulham Palace Road, it is within easy reach of the local area's shops, restaurants and sports facilities (tennis courts and gym). Putney Bridge (District Line) is the closest underground station, and there is also a good bus service to Hammersmith along Fulham Palace Road and east towards South Kensington on the Old Brompton Road.

Holding deposit: 1 week's rent

Security deposit: 5 weeks' rent

Council tax band: F

Minimum term: 12 months

Spacious three bedroom flat in the very popular Bishops Mansions (Stevenage Road end) located on the first floor. EPC rating C.



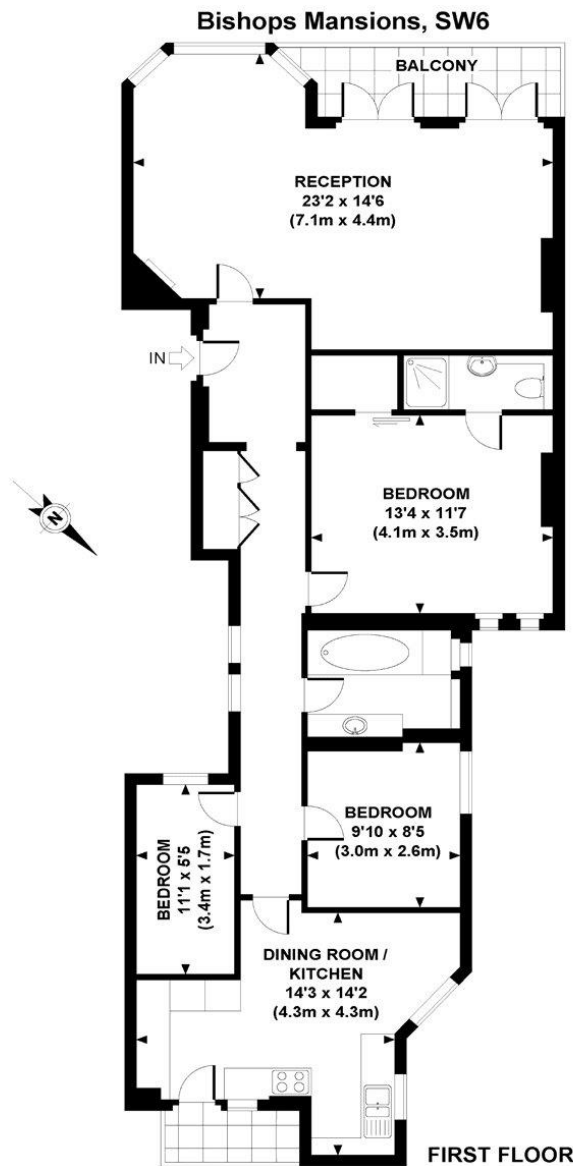


**OUTSIDE**

**ADDITIONAL INFORMATION**

Offers	Available for a minimum term of 12 months longer terms will be considered
Viewing	Strictly by appointment
Local Authority	- Council Tax Band F
Directions	





APPROXIMATE GROSS INTERNAL AREA 1070 SQ FT / 99.5 SQ M

Whilst every attempt has been made to ensure the accuracy of this floor plan, measurements of door, windows, rooms and all other items are approximate. No responsibility is taken for any error, omission or mis-statement. This floor plan is for illustrative purposes only, and should be treated as such.

**T: 020 7751 8898**

361 Fulham Palace Road, London, SW6 6TA

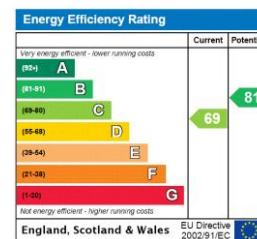
E: [parsonsgreen.residential.lettings@carterjonas.co.uk](mailto:parsonsgreen.residential.lettings@carterjonas.co.uk)



*Exclusive UK affiliate of*

**CHRISTIE'S**  
INTERNATIONAL REAL ESTATE

Classification L2 - Business Data



### IMPORTANT INFORMATION

Our property particulars do not represent an offer or contract, or part of one. The information given is without responsibility on the part of the agents, seller(s) or lessor(s) and you should not rely on the information as being factually accurate about the property, its condition or its value. Neither Carter Jonas LLP nor anyone in its employment or acting on its behalf has authority to make any representation or warranty in relation to this property. We have not carried out a detailed survey, nor tested the services, appliances or fittings at the property. The images shown may only represent part of the property and are as they appeared at the time of being photographed. The areas, measurements and distances are approximate only. Where Carter Jonas have been provided with a floorplan by a third party, we can not guarantee that the floorplan has been measured in accordance with IPMS. Any reference to alterations or use does not mean that any necessary planning permission, building regulation or other consent has been obtained. The VAT position relating to the property may change without notice. Administration fees may apply depending on tenancy type. Please contact your local branch for this information.