



EFFIE ROAD, LONDON, SW6
£2,400 per month*

Carter Jonas

BASEMENT FLAT, EFFIE ROAD, LONDON, SW6

A superb one bedroom flat with garden, moments from Fulham Broadway Tube Station. EPC D

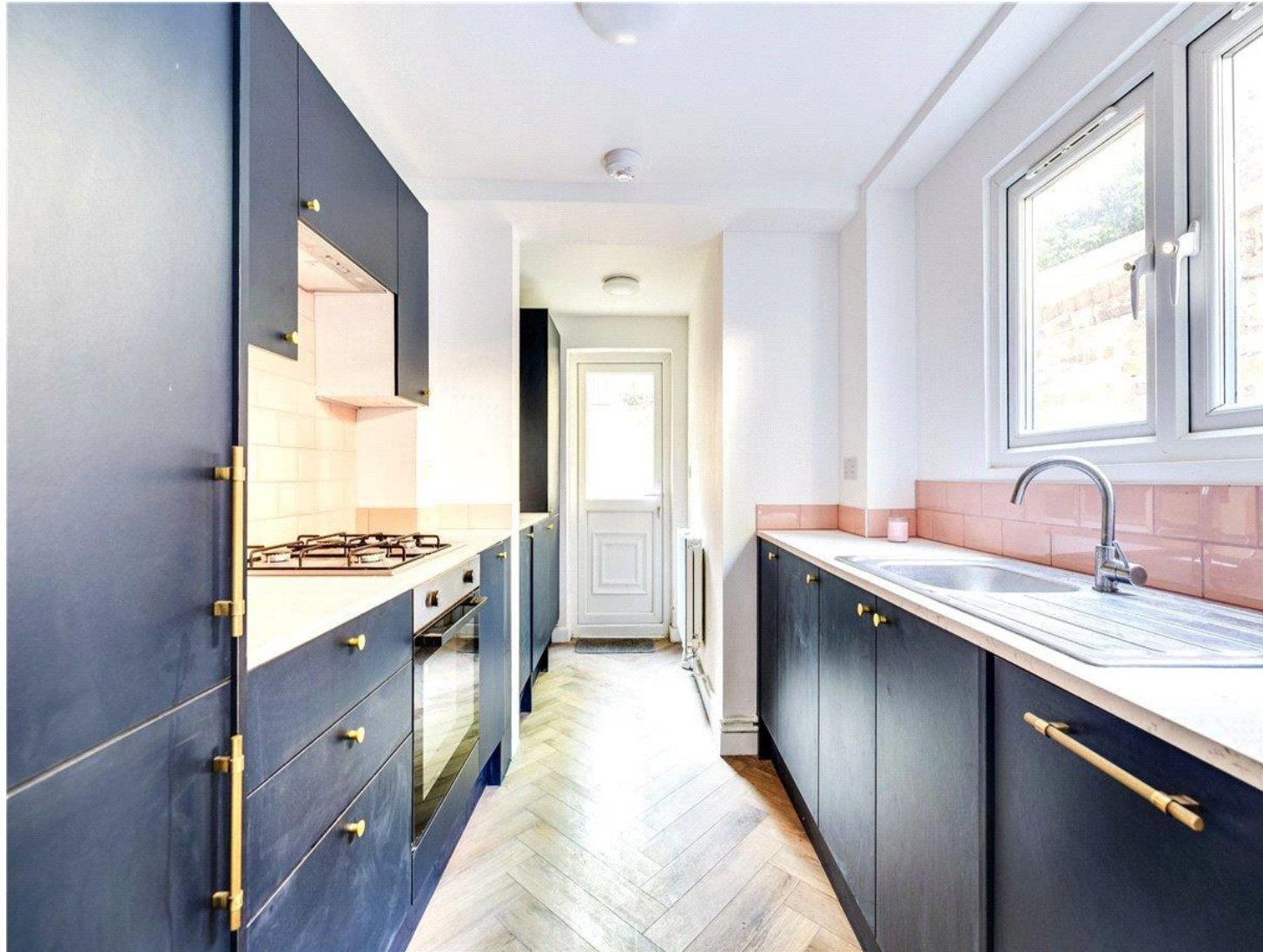
- Immaculate condition
- Moments from Fulham Broadway Tube
- One double bedroom
- Modern bathroom & kitchen
- Private patio garden
- Wooden floors throughout

THE PROPERTY

This garden flat is ideally located for access to transport in and out of London. Recently renovated and offering great living space, the flat comprises one double bedroom, beautifully fitted modern bathroom, flexible living space with both seating and dining area, wooden floors throughout and a newly fitted galley kitchen with great storage space leading out to the private south facing rear patio garden.

LOCATION

Effie Road is located just off Fulham Road/Harwood Road and is 0.1m from Fulham Broadway Underground Station - perfect for commuters or as a 'pied a terre'. The vibrant bars, restaurants and amenities of Fulham Road are on your doorstep and close by are the open spaces of Eel Brook Common and the popular New Kings Road.



Holding deposit: 1 week's rent

Security deposit: 5 weeks' rent

Council tax: Band D

Minimum term: 12 months

Parking on street via a permit

Pets considered

ADDITIONAL INFORMATION

| | |
|--------|--|
| Offers | Available for a minimum term of 12 months Longer terms will be considered |
|--------|--|

| | |
|---------|-------------------------|
| Viewing | Strictly by appointment |
|---------|-------------------------|

| | |
|-----------------|----------------------|
| Local Authority | - Council Tax Band D |
|-----------------|----------------------|

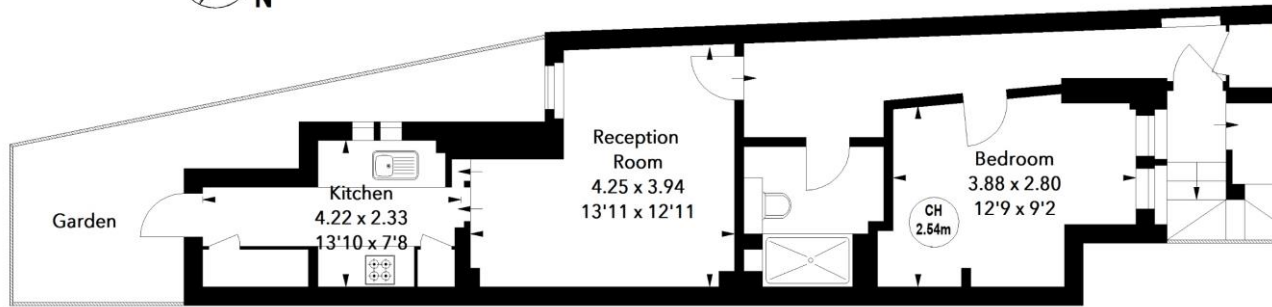


Effie Road, SW6

Approximate Area = 49.33 sq m / 531 sq ft



Key :
CH - Ceiling Height



Lower Ground Floor

The floor plan is not to scale and measurements and areas shown are approximate and therefore should be used for illustrative purposes only. The plan has been prepared in accordance with the RICS code of Measuring Practice and whilst we have confidence in the information produced, it must not be relied on. If there is any aspect of particular importance, you should carry out or commission your own inspection of the property.

| Energy Efficiency Rating | | Current | Potential |
|---|---|-------------------------|-----------|
| Very energy efficient - lower running costs | | | |
| (91-100) | A | | |
| (81-90) | B | | |
| (69-80) | C | | |
| (55-68) | D | | |
| (48-54) | E | | |
| (37-47) | F | | |
| (1-36) | G | | |
| Not energy efficient - higher running costs | | | |
| England, Scotland & Wales | | 67 | 75 |
| | | EU Directive 2002/91/EC | |



T: 020 7751 8898

361 Fulham Palace Road, London, SW6 6TA

E: fulhamlettings@carterjonas.co.uk

A member of



Exclusive UK affiliate of

CHRISTIE'S
INTERNATIONAL REAL ESTATE

Classification L2 - Business Data

IMPORTANT INFORMATION

These particulars are for general information purposes only and do not represent an offer or contract or part of one. Carter Jonas or anyone in their employment has made every attempt to ensure that the particulars and other information provided are as accurate as possible and they are not intended to amount to advice on which you should rely as being factually accurate. Full information which may be relevant to your decision regarding the property can be found on the property listing on carterjonas.co.uk or a separately available material information sheet, and we would advise you to confirm the details of any material information prior to any offer being submitted. You should not assume that the property has all necessary planning, building regulations or other consents and Carter Jonas has not tested any services, facilities, or equipment. Any measurements and distances given are approximate only. Where Carter Jonas has been provided with a floorplan by a third party, we cannot guarantee that the floorplan has been measured in accordance with IPMS. Purchasers or prospective tenants must satisfy themselves of all of the aforementioned by independent inspection or otherwise. Our images only represent part of the property as it appeared at the time they were taken and do not represent the furnishings included; these are confirmed in a separate inventory. If you require further information, please contact us. *Administration fees may apply depending on tenancy type. Please contact your local branch for this information.