



WESTCROFT SQUARE, LONDON, W6
£1,950 per month*

Carter Jonas

GROUND FLOOR, WESTCROFT SQUARE, LONDON, W6

- One double bedroom
- Spacious reception room
- Great built in storage
- High ceilings
- EPC rating C

THE PROPERTY

A bright and spacious one-bedroom raised ground floor apartment, ideally located in a sought-after area of Hammersmith.

The property features a generous reception room at the front, with a separate kitchen, bathroom, and double bedroom positioned to the rear. Additional benefits include ample built-in storage throughout.

LOCATION

The property is ideally situated on the borders of Hammersmith and Chiswick, close to fantastic shops, bars and restaurants as well as both Stamford Brook and Ravenscourt underground, all within short walking distance. Westcroft Square is a beautiful garden square which can be accessed for free by the residents.

A spacious one double bedroom raised ground floor apartment. EPC rating C



Holding deposit: 1 week's rent

Security deposit: 5 weeks' rent

Council tax: Band D

Minimum term: 12 months

No pets


ADDITIONAL INFORMATION

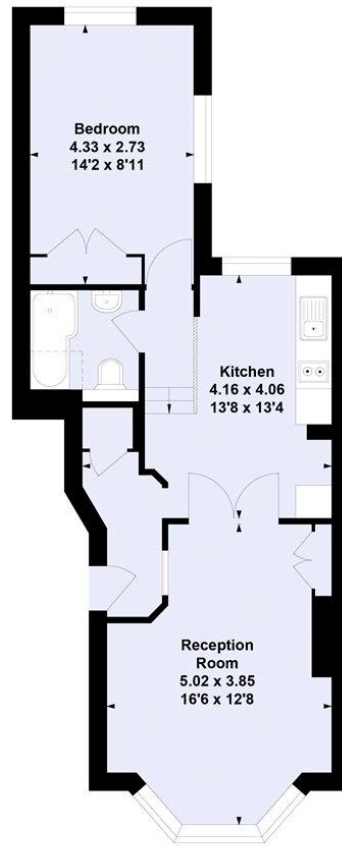
Offers	Available for a minimum term of 12 months Longer terms will be considered
Viewing	Strictly by appointment
Local Authority	Hammersmith and Fulham Council Tax Band D



Westcroft Square, W6

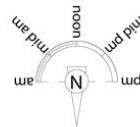
Approximate Floor Area = 47.74 sq m / 514 sq ft

 = Reduced head height below 1.5m



Ground Floor

This floor plan has been prepared in accordance with the RICS Property Measurement Standards. All measurements are approximate and for illustrative purposes only.



Carter Jonas

Exclusive UK affiliate of
CHRISTIE'S
INTERNATIONAL REAL ESTATE

T: 020 7751 8898

361 Fulham Palace Road, London, SW6 6TA

E: fulhamlettings@carterjonas.co.uk

A member of



Classification L2 - Business Data



IMPORTANT INFORMATION

These particulars are for general information purposes only and do not represent an offer or contract or part of one. Carter Jonas or anyone in their employment has made every attempt to ensure that the particulars and other information provided are as accurate as possible and they are not intended to amount to advice on which you should rely as being factually accurate. Full information which may be relevant to your decision regarding the property can be found on the property listing on carterjonas.co.uk or a separately available material information sheet, and we would advise you to confirm the details of any material information prior to any offer being submitted. You should not assume that the property has all necessary planning, building regulations or other consents and Carter Jonas has not tested any services, facilities, or equipment. Any measurements and distances given are approximate only. Where Carter Jonas has been provided with a floorplan by a third party, we cannot guarantee that the floorplan has been measured in accordance with IPMS. Purchasers or prospective tenants must satisfy themselves of all of the aforementioned by independent inspection or otherwise. Our images only represent part of the property as it appeared at the time they were taken and do not represent the furnishings included; these are confirmed in a separate inventory. If you require further information, please contact us. *Administration fees may apply depending on tenancy type. Please contact your local branch for this information.