



OWENS ROAD, WINCHESTER, SO22

£1,700 per month*

Carter Jonas

OWENS ROAD, WINCHESTER, HAMPSHIRE, SO22 6RU

- 3 Bedrooms
- 1 Reception Room
- 1 Bathroom
- Patio Garden
- Permit Parking
- House
- Unfurnished

THE PROPERTY

The house has been sympathetically refurbished and has wooden floors to the double reception room, there is a feature, (non-working, fireplace). The kitchen has a breakfast bar, range style cooker and gas hob, fridge, freezer and washing machine and French windows to the garden.

Upstairs there are 3 double bedrooms and the bathroom is being refreshed and improved before the start of a new tenancy.

OUTSIDE

There is a charming patio garden with shed and rear access for waste bins. Permit parking.

An Edwardian terraced house in the popular area of Fulflood within an easy walk of the train station with main line service to London Waterloo, the amenities of the city centre of Winchester, Western Primary, Westgate All Through School & Peter Symonds 6th Form College.



ADDITIONAL INFORMATION

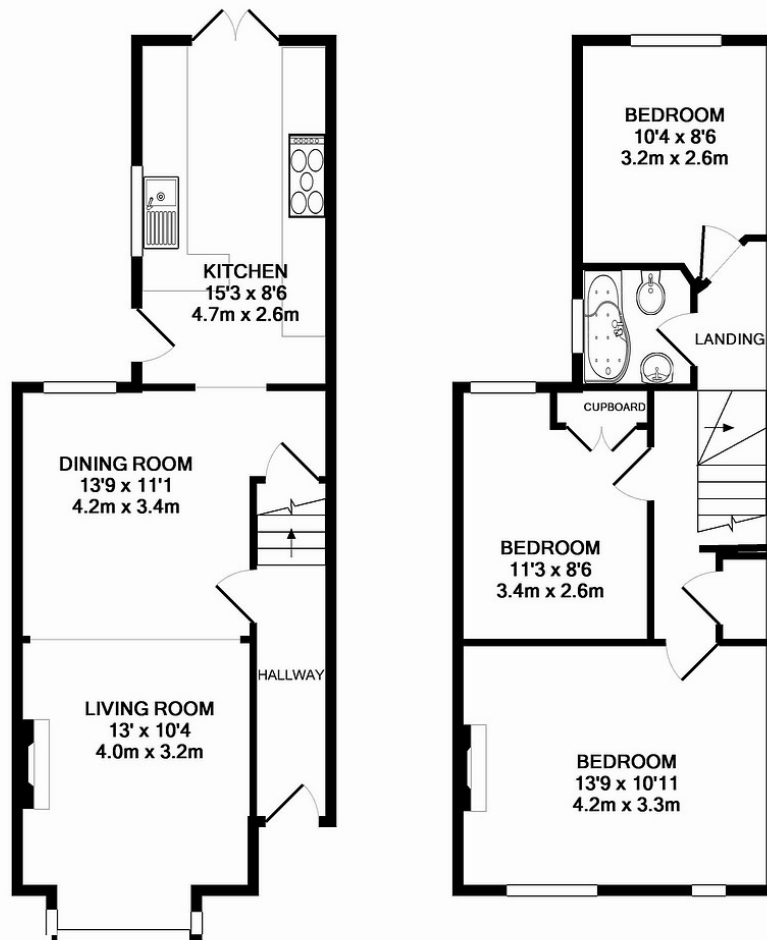
Term	Minimum term 6 months, maximum term 9 months
Deposit	Holding deposit equivalent to 1 week's rent = £392 Deposit is 5 weeks' rent @£1,700 pcm = £1,961
Local Authority	Council Tax Band D – check with Winchester City Council for current charges
Services	Mains water, gas and electricity For Internet and mobile coverage please check the Ofcom website

Energy Efficiency Rating

	Current	Potential
Very energy efficient - lower running costs		
(92+) A		
(81-91) B		
(69-80) C		78
(55-68) D	59	
(39-54) E		
(21-38) F		
(1-20) G		
Not energy efficient - higher running costs		

England, Scotland & Wales EU Directive 2002/91/EC





GROUND FLOOR
APPROX. FLOOR
AREA 40.6 SQ.M.
(437 SQ.FT.)

1ST FLOOR
APPROX. FLOOR
AREA 40.3 SQ.M.
(434 SQ.FT.)

TOTAL APPROX. FLOOR AREA 81.0 SQ.M. (871 SQ.FT.)

Whilst every attempt has been made to ensure the accuracy of the floor plan contained here, measurements of doors, windows, rooms and any other items are approximate and no responsibility is taken for any error, omission, or mis-statement. This plan is for illustrative purposes only and should be used as such by any prospective purchaser. The services, systems and appliances shown have not been tested and no guarantee as to their operability or efficiency can be given

Made with Metropix ©2009

T: 01962 876838

9a Jewry Street, Winchester, Hampshire, SO23 8RZ

E: winchester-residentiallettings@carterjonas.co.uk

A member of



Exclusive UK affiliate of

CHRISTIE'S
INTERNATIONAL REAL ESTATE

Classification L2 - Business Data



IMPORTANT INFORMATION

These particulars are for general information purposes only and do not represent an offer or contract or part of one. Carter Jonas or anyone in their employment has made every attempt to ensure that the particulars and other information provided are as accurate as possible and they are not intended to amount to advice on which you should rely as being factually accurate. Full information which may be relevant to your decision regarding the property can be found on the property listing on carterjonas.co.uk or a separately available material information sheet, and we would advise you to confirm the details of any material information prior to any offer being submitted. You should not assume that the property has all necessary planning, building regulations or other consents and Carter Jonas has not tested any services, facilities, or equipment. Any measurements and distances given are approximate only. Where Carter Jonas has been provided with a floorplan by a third party, we cannot guarantee that the floorplan has been measured in accordance with IPMS. Purchasers or prospective tenants must satisfy themselves of all of the aforementioned by independent inspection or otherwise. Our images only represent part of the property as it appeared at the time they were taken and do not represent the furnishings included; these are confirmed in a separate inventory. If you require further information, please contact us. *Administration fees may apply depending on tenancy type. Please contact your local branch for this information.