



32 NORTH VIEW

Winchester, Hampshire, SO22 5EH

Carter Jonas

32 NORTH VIEW, WINCHESTER, HAMPSHIRE, SO22 5EH

- 4 bedrooms
- 2 bathrooms
- Extended kitchen with log burner
- Sitting room
- Playroom/study
- Located less than ½ mile from Winchester train station and city centre

DESCRIPTION

The entrance door opens into the ground floor entrance hall with the sitting room and playroom/study on the left and useful cloakroom/shower room. The stairs descend down to the contemporary fitted kitchen/breakfast room with character log burner with bi-folding doors and sky lights leading out to the terraced garden which provides excellent entertainment space. The stairs leading up to the first floor accommodate 2 bedrooms including the main bedroom, family bathroom and utility cupboard. The top floor has been cleverly split to create 2 further bedrooms with spectacular far reaching views.

OUTSIDE

To the front of the property, steps lead down alongside a useful storage shed and small courtyard area. The rear garden is westerly aspect and has a sunny decking area and lawn bordered by shrubs and there is also a useful storage shed.

A DELIGHTFUL CHARACTER, 4 BEDROOM VICTORIAN PROPERTY SITUATED IN THE VERY EXCLUSIVE ORAM'S ARBOUR NEIGHBOURHOOD, OFFERING FLEXIBLE ACCOMMODATION AND A FABULOUS EXTENDED LIVE IN KITCHEN PROVIDING EXCELLENT ENTERTAINMENT SPACE



LOCATION

Conveniently situated in the desirable residential neighbourhood of Oram's Arbour. Located less than 0.5 miles of the station (Waterloo in around 1 hour) and Winchester city centre with its many shops, restaurants, public houses, coffee shops, library, theatres, cinema, Cathedral and more. There are attractive walks and cycle routes along the River Itchen and Winnall Moors which can be found approximately a mile way. Western Church of England Primary School and The Westgate School, rated Ofsted 'Outstanding', are both within 0.5 miles and Peter Symonds College is 0.9 miles distant. In addition, St Swithun's School for girls, Winchester College and The Pilgrims' School for boys are also within easy access.

ADDITIONAL INFORMATION

Tenure: Freehold.

Services: Mains water and drainage. Mains electricity. Gas central heating. Broadband: Fibre to the Cabinet (FTTC). For internet and mobile services check Ofcom's website.

Local Authority: Winchester City Council. Council Tax Band: E.

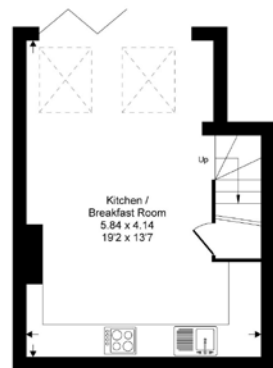
Viewings: Strictly by appointment with Carter Jonas, 01962 842742.



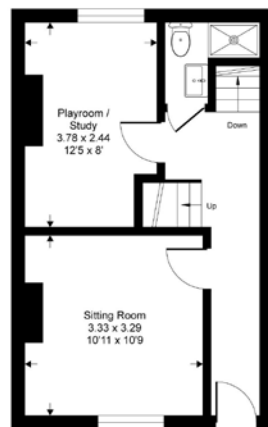


North View, SO22

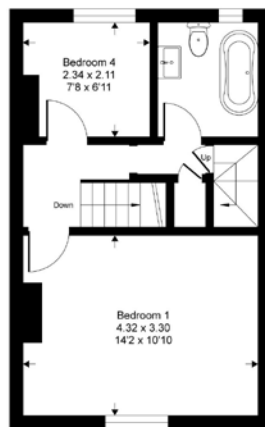
Approximate Gross Internal Area = 103.1 sq m / 1110 sq ft
(excludes restricted head height)



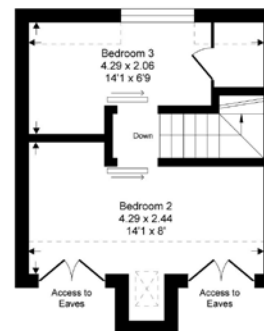
Lower Ground Floor



Ground Floor



First Floor



Second Floor

This floor plan is for representation purposes only as defined by the RICS code of Measuring Practice (and IPMS where requested) and should be used as such by any prospective purchaser. Whilst every attempt has been made to ensure the accuracy contained here, the measurement of doors, windows and rooms is approximate and no responsibility is taken for any error, omission or mis-statement. Specifically no guarantee is given on the total area of the property if quoted on the plan. Any figure provided is for guidance only and should not be used for valuation purposes.

Produced for Carter Jonas



Energy Efficiency Rating		
	Current	Potential
Very energy efficient - lower running costs		
(92+) A		
(81-91) B		83
(69-80) C		
(55-68) D		
(39-54) E	53	
(21-38) F		
(1-20) G		
Not energy efficient - higher running costs		
England, Scotland & Wales	EU Directive 2002/91/EC	

Winchester 01962 842742

winchester@carterjonas.co.uk

9a Jewry Street, Winchester, SO23 8RZ

carterjonas.co.uk

Offices throughout the UK

Exclusive UK affiliate of

CHRISTIE'S
INTERNATIONAL REAL ESTATE

IMPORTANT INFORMATION

These particulars are for general information purposes only and do not represent an offer of contract or part of one. Carter Jonas has made every attempt to ensure that the particulars and other information provided are as accurate as possible and are not intended to amount to advice on which you should rely as being factually accurate. You should not assume that the property has all necessary planning, building regulations or other consents and Carter Jonas have not tested any services, facilities or equipment. Any measurements and distances given are approximate only. Purchasers must satisfy themselves of all of the aforementioned by independent inspection or otherwise. Although we make reasonable efforts to update our information, neither Carter Jonas LLP nor anyone in its employment or acting on its behalf makes any representations warranties or guarantees, whether express or implied, in relation to the property, or that the content in these particulars is accurate, complete or up to date. Our images only represent part of the property as it appeared at the time they were taken. If you require further information please contact us.