



ST. NICHOLAS CLOSE, NORTH NEWBALD, YO43
£300,000

Carter Jonas

ST. NICHOLAS CLOSE, NORTH NEWBALD, YO43

A 3 bedroom link-detached property situated in a popular village, offering well balanced accommodation and a private garden to the rear.

14 St. Nicholas Close is a beautifully presented link-detached property nestled in a quiet cul-de-sac, perfectly located near the church and village centre. This charming home, originally designed as a four-bedroom residence, has been thoughtfully reimagined as a stunning three-bedroom property featuring an exquisite principle bedroom suite.

Upon entering, you are greeted by a spacious formal sitting room at the front, while the rear boasts an open-plan dining kitchen illuminated by bi-fold doors that seamlessly connect to the garden. A convenient utility room is discreetly located behind the garage, enhancing the functionality of the home.

The upper floor hosts three well-appointed bedrooms, including the principle that features a dressing room area (previously the fourth bedroom) and is served by the house bathroom that has access direct from the bedroom. The second bedroom benefits from its own en-suite shower room, adding to the comfort and convenience of the living space.

Outside, the rear garden is adorned with gravel and includes a raised deck directly adjacent to the house, perfect for alfresco dining, along with a stylish block-set patio. The property also offers a driveway at the front, providing off-street parking and access to the garage. This delightful home is a true gem, combining modern living with a peaceful, picturesque setting.

North Newbald is situated between South Cave and Sancton, in the popular area of the Yorkshire Wolds. The village is a peaceful place to be and is a favourite for many walkers. There is a thriving local community here with a very active local Parish Council that provides a 'What's happening' newsletter with events for young and old such as Christmas concerts, a local WI, activities for children in the village hall, and a youth club. There are two pubs, a beautiful Norman church built in 1140 AD and a children's play park.

A bus service runs from North Newbald to Beverley, Brough, Elloughton, North Cave, South Cave and Hotham.

TENURE Freehold

LOCAL AUTHORITY

EPC BAND C

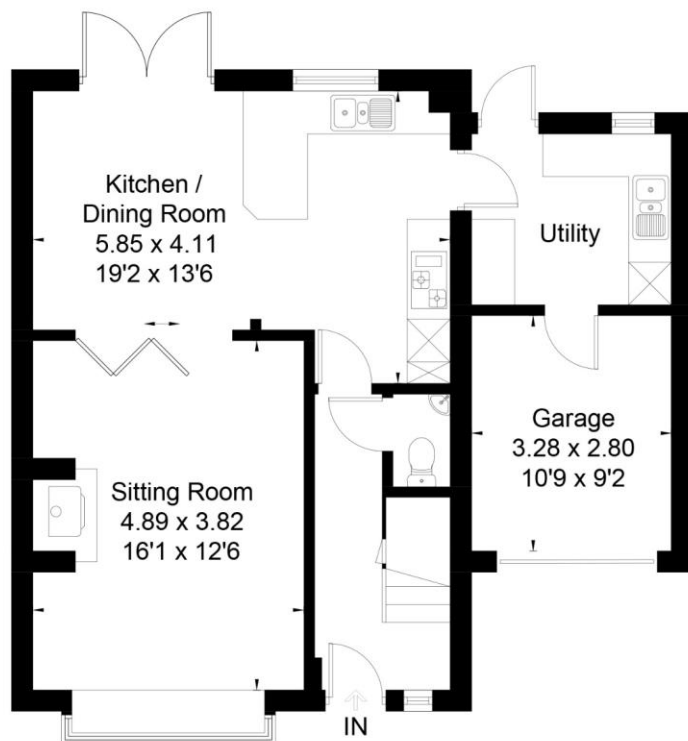
A 3 BEDROOM LINK-DETACHED PROPERTY SITUATED IN A POPULAR VILLAGE, OFFERING WELL BALANCED ACCOMMODATION AND A PRIVATE GARDEN TO THE REAR.







14 St. Nicholas Close, North Newbald York YO43 4TT
Approximate Area = 1452 sq ft / 134.9 sq m



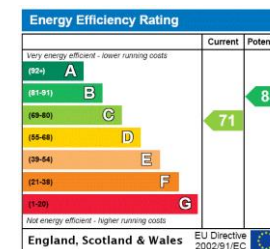
Ground Floor



First Floor



This floor plan has been drawn in accordance with RICS Property Measurement 2nd edition.
All measurements, including the floor area, are approximate and for illustrative purposes only. @fourwalls-group.com #91294



York 01904 558200

york@carterjonas.co.uk
82 Micklegate, York, YO1 6LF

carterjonas.co.uk
Offices throughout the UK

Exclusive UK affiliate of

CHRISTIE'S
INTERNATIONAL REAL ESTATE

IMPORTANT INFORMATION

These particulars are for general information purposes only and do not represent an offer of contract or part of one. Carter Jonas has made every attempt to ensure that the particulars and other information provided are as accurate as possible and are not intended to amount to advice on which you should rely as being factually accurate. You should not assume that the property has all necessary planning, building regulations or other consents and Carter Jonas have not tested any services, facilities or equipment. Any measurements and distances given are approximate only. Purchasers must satisfy themselves of all of the aforementioned by independent inspection or otherwise. Although we make reasonable efforts to update our information, neither Carter Jonas LLP nor anyone in its employment or acting on its behalf makes any representations warranties or guarantees, whether express or implied, in relation to the property, or that the content in these particulars is accurate, complete or up to date. Our images only represent part of the property as it appeared at the time they were taken. If you require further information please contact us.